

Florida Paleontological Society , Inc.

Newsletter



Volume 8 Number 3

Fall Quarter 1991

FLORIDA PALEONTOLOGICAL SOCIETY, INC.

OFFICERS

President:	Jim Pendergraft, 17 Jeff Road Largo, Florida 32544
President-Elect:	Frank Rupert, Florida Geological Survey, 903 W. Tenn. St., Tallahassee, Florida 32304
Past President:	Bill Webster, 12457 Condor Drive Jacksonville, Florida 32223
Vice President:	Rudi Johnson, 4215 Barcelona St. Tampa, FL 33629
Secretary:	Eric Taylor, P.O. Box 3506 Lake City, Florida 32056
Treasurer:	Kevin Schindler, Florida Museum of Natural History Gainesville, Florida 32611

BOARD OF DIRECTORS

Tim Cassady, Marianna, 1993	Don Crissinger, Nichols, 1992
Gordon Hubbell, Miami, 1992	Clifford Jeremiah, Jacksonville, 1992
Roger Portell, Gainesville 1994	Warren Allmon, Tampa, 1994
Sue Pendergraft, Largo, 1994	Marilyn Whetzel, Boca Raton, 1993
Phil Whisler, Casselberry, 1992	Bruce MacFadden, Gainesville, 1993
	Ray Robinson, St. Petersburg, 1993

COMMITTEES AND APPOINTMENTS

M. C. Thomas Book: Nominations: Finance: Spring Meeting: Membership: By-Laws: Honorary Members and Awards: Historical: Board of Editors:	D. Webb, Roger Portell, Kevin Schindler D. Lorenzo, Rudi Johnson, Tim Cassady K. Schindler, R. Portell, B. MacFadden S. Pendergraft, J. Latvis, J. Pendergraft Bob Marsh, A. Brown, B. MacFadden A. Brown, Eric Taylor, Robyn Miller D. Webb, J. Pendergraft, C. Jeremiah B. Waller, C. Jeremiah Gary Morgan, Frank Rupert, Jeremy Setty David Webb
Museum Representative (appointed): Resident Agent:	Doug Jones S. David Webb

HONORARY MEMBERS

Margaret C. Thomas, Joe Larned, Ben Waller, Anita Brown

INFORMATION, MEMBERSHIP, AND PUBLICATION INFORMATION

Please Address: Secretary, Florida Paleontological Society, Inc.
Florida Museum of Natural History
University of Florida
Gainesville, FL 32611

Seasons Greetings



*Wishing you a warm
and wonderful holiday season*

CONTENTS

Contents 1
 Prep Talk 1
 News From the Florida Museum of Natural History 2
 From the Invertebrate Paleontology Collection 2
 From the Vertebrate Paleontology Collection 2
 From the Paleobotany Laboratory 3
 Upcoming Events 4
 Fall Meeting Summary 4
 Fall Meeting Highlights 5
 Phillip Whisler Receives 1991 Converse Award 7
 Vertebrate Misadventures 8
 Annual Meeting Minutes 10
 Board of Directors Meeting Minutes 13
 FPS Revenue and Expense Report and Statement of Assets 15

PREP TALK

by Russ McCarty

Greetings to all FPS members. Those of you who have been around for a while will remember that I started a column in the newsletter about four or five years ago which dealt with the topics of fossil preparation, conservation, and casting. For whatever reasons, the column didn't last too long, but now the time seems ripe to give it another try.

A logical approach might be to discuss different aspects of the above-mentioned topics in each newsletter, beginning in the field while the fossil is still in the ground. However, I would also like to hear from FPS members and other interested parties. Your comments, questions, or advice will be addressed in each column in

whatever direction the members wish, and by doing so put the newsletter more in tune with the needs of FPS members. It's even possible that we could answer *any* questions dealing with Florida paleontology.

What are your questions? What topics do you want to hear about? Do you have any tips you wish to share? Let's hear from you out there and get this column moving!

Send your questions, ideas, comments, or tips to:

**Russ McCarty
 Prep Lab
 Florida Museum of
 Natural History
 University of Florida
 Gainesville, FL 32611**

NEWS FROM THE FLORIDA MUSEUM OF NATURAL HISTORY

FROM THE INVERTEBRATE PALEONTOLOGY COLLECTION

Dr. Douglas Jones attended the annual meeting of the Geological Society of America last month in San Diego, California. While there, he and his co-authors reported on research involving Eocene coral-boring bivalves from the Ocala Group, advances in Miocene stratigraphy in Florida from Strontium studies, and stable isotope investigations of life history in Pliocene turritelline gastropods. Jones also led a workshop sponsored by the Paleontological Society on geochemical aspects of paleontology.

In the September issue of the *Journal of Geology*, Jones, **Bruce MacFadden**, **David Webb**, and others published a paper which discussed the age of the vertebrate and invertebrate fossils at the famous APAC Shell Pit in Sarasota.

Dr. David Nicol and Jones recently published a paper in the *American Conchologist*, a journal for people interested in all aspects of shells and shell collecting. In this paper the authors discuss the present distribution of continents and oceans around the world and relate this to the geographical diversity of marine bivalve mollusks. Jones is presently finishing a paper with a former student on a new species of Eocene *Lithophaga* and is actively engaged in seeking research funds to replace those cut by the State of Florida in the ongoing budget crisis.

Roger Portell and **Kevin Schindler** continue to identify and catalog around 1,000 lots (8,000 specimens) per month. Presently, the Invertebrate Paleontology Collection contains about 340,000 catalogued and computerized specimens.

Portell is also involved with several research projects, including the description of a new species of gastropod from the Pliocene Tamiami Formation which will be published in *Tulane Studies in Geology and Paleontology*, and the description of new coral-inhabiting barnacles from the Miocene Chipola Formation and Pliocene Tamiami Formation with co-author **Victor Zullo**. Zullo and Portell recently published a paper in *Tulane Studies* on barnacles from the Early Miocene Parachucla and Penny Farms Formations of northern Florida.

FROM THE VERTEBRATE PALEONTOLOGY COLLECTION

Bruce J. MacFadden reports that his book on *Fossil Horses* has been accepted for publication by Cambridge University Press and is currently in production. It will probably appear during the late summer or fall of 1992. As that time approaches, he will provide ordering information for the FPS newsletter and local chapters throughout Florida. During the Fall Semester, Bruce has been teaching Vertebrate Paleontology and leading an informal reading-seminar course on the new applications of bone chemistry in studying ancient diets in fossil mammals as well as the environments in which they lived. In October, Bruce, **Gary Morgan**, and **Art Poyer** attended the 51st Annual Society of Vertebrate Paleontology Meeting in San Diego, California. Otherwise this semester, Bruce has submitted two chapters to edited books and is analyzing paleomagnetic data from a very interesting site in the high Andes of Bolivia that contains many interesting fossil mammals.

**FROM THE PALEOBOTANY
LABORATORY**

Dr. David Dilcher attended an international paleobotanical conference in India in October, and is presently working with colleagues at the Birbal Sahni Institute of Paleobotany, Lucknow, India. He will return in early December. **Terry Lott** is scanning published photos and drawings of Cretaceous leaves into the image analysis system for computer image cataloging, and is working the "bugs" out of the new computer equipment. He is also continuing curation of materials brought from Indiana as well as collections from recent field work.

Dr. Judy Skog is continuing her research on fossil aquatic ferns from the Cretaceous of North America and will be returning to her home base, George Mason University, in January. She has completed an article on the oldest known leaves of *Marsilea*, and is currently working in collaboration with David Dilcher on fossil remains of *Isoetes* from Kansas.

Dr. Herb Meyer attended the national meetings of the Geological Society of America in San Diego in October, where he presented a paper on paleoenvironments of fossil floras in the Rocky Mountains. He also presented this year's Strimple Award at the annual meeting of the Paleontological Society. This year's award recognized the outstanding achievements of amateur paleontologist Melvin Ashwill. Herb is continuing work with **Dr. Steven Manchester** on a revision of the Oligocene Bridge Creek flora of western North America. Steve represented the paleobotany lab at the recent annual meeting of the Florida Paleontological Society in Tallahassee. In October, he attended a field conference of the International Geological Correlation Program dealing with

recognition of the Paleocene/Eocene boundary in Mississippi and Alabama. He has recently completed an article on Eocene fossil flowers from Colorado which contain intact pollen, and is now finishing a monograph on 140 genera of fossil fruits and seeds from the Eocene of Oregon. Steve is currently on the look out for Tertiary fossil wood, leaf, and seed localities in Florida and adjacent states.

At present, there are three students working in the paleobotany lab under the direction of David Dilcher. **Vic Call** continues his dissertation research on fruits and seeds of flowering plants from Early Tertiary sediments of North America. He is investigating the appearance and radiation in the fossil in the fossil record of morphological adaptations of the fruits or seeds designed to aid in the wind-dispersal of these propagules, such as papery wings, tufts of hair, etc. Many of the fossils under study are from commercial clay pits in western Tennessee, Kentucky, and northern Mississippi, and are components of the extensive flora of the Middle Eocene Claiborne Group exposed in the northern part of the Mississippi Embayment. In October, Vic made a 10-day tour of numerous clay mines in these states and collected a number of fossil fruits pertinent to his research, as well as several large lignitized logs from a new locality in Kentucky. **Michael Muller** is studying a large collection of fossil flowers from the Cenomanian Dakota Formation in Kansas and Nebraska. The rich variety of flowers from these 100 million year-old sediments is providing paleobotanists with important data on the early diversity of floral morphologies and the evolution of pollination systems at a time early in the evolution and radiation of the flowering plants. **Quiangshang "Chuck" Huang** is looking at dispersed plant cuticles from various terrigenous depositional environments in the Dakota Formation sediments of Kansas and Nebraska for his dissertation project. His work demonstrates that dispersed cuticles can be used for biostratigraphy and correlation of sedimentary environments where plant macrofossils are lacking.

UPCOMING EVENTS

November 23-24, 1991: Astronaut Trail Shell Club field trip to St. Joe Bay, Cape San Blas, and Oak Grove. Call Cindy Bolton (407) 589-2579 for info.

November 24, 1991: Southwest Florida Conchologist Society field trip to Marco Island. Call Jack Becker (813) 989-4231.

November 30, 1991: Gem and mineral Society of the Palm Beaches, 25th Annual Gem, Mineral, and Jewelry Show. West Palm Beach Auditorium; contact Ted Mauss (407) 967-8756 for info.

December 7, 1991: Tampa Bay Fossil Club collecting trip to the Cargill Phosphate Mine, (members only). Call Margaret Sellari, (813) 968-6820 for info.

December 21, 1991: Tampa Bay Fossil Club collecting trip to Leisey Shell Pit (members only). See previous information number.

January 10-12, 1992: Great American Gem, Mineral, Jewelry and Fossil Show, Ahepa Convention Center, Tarpon Springs, Florida. Contact Kay Kostas, (216) 779-9509.

January 17-19, 1992: Great American Gem, Mineral and Fossil Show, Kissimmee Valley Fairground. Contact Kay Kostas (216) 779-9509.

January 24-26, 1992: Great American Gem, Mineral and Fossil Show, Manatee Convention Center. Contact Kay Kostas (216) 779-9509.

Fall Meeting Summary

The 1991 Fall Meeting of the Florida Paleontological Society was held in Tallahassee the weekend of October 11-13, 1991. The weekend commenced with an open house Friday evening at the Florida Geological Survey. Attendees were treated to snacks, refreshments and free publications, and were given tours of the Survey facilities.

Saturday morning, the group drove west to Marianna for a tour of the caves at Florida Caverns State Park. They saw many impressive cave features, including a number of Eocene fossils in the limestone cave walls. During the return to Tallahassee, the group stopped for a tasty southern-style lunch at Jack Wingate's Lunker Lodge, on the shore of Lake Talquin in southern Georgia.

The schedule was tight, but the group made it back to Tallahassee in time for a behind the scenes tour of the conservation lab at the Museum of Florida History. Here, Mr. Herb Bump, Chief Conservator, explained some of the artifact restoration programs currently in progress. Afterwards, members toured the museum, which features numerous Indian artifacts, Spanish shipwreck treasures, and the mounted skeleton of the Wakulla Springs Mastodon.

Then it was on to the Florida State Conference Center for a coffee break prior to the Annual Meeting. Members had an opportunity to swap fossil stories and have some of their unknown finds examined by the experts from the Florida Museum of Natural History staff along on the trip.

During the annual meeting, the new FPS

officers were announced, and other business matters addressed. Phil Whisler was presented with the 1991 Converse Award in recognition of his contributions to Florida paleontology. A short FPS Board meeting followed the annual meeting.

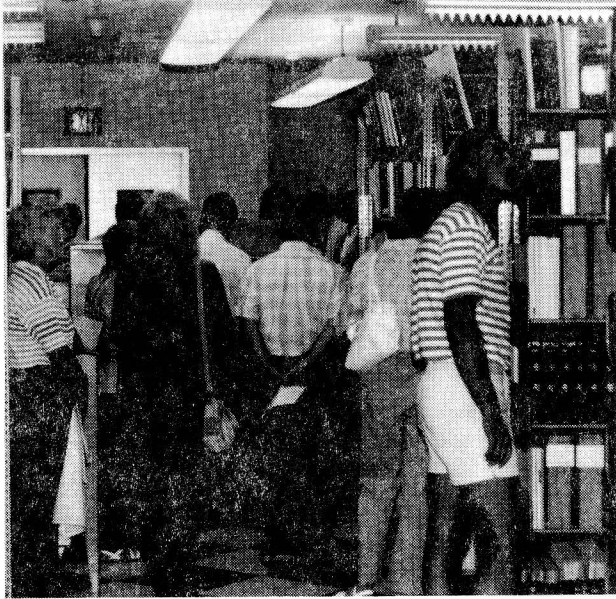
Rounding out the evening was a buffet-style banquet dinner at the Conference Center, followed by a talk by Dr. Emily Vokes of Tulane University. Dr. Vokes provided us with a slide-show overview of the Chipola Formation of northern Florida. This interesting Miocene unit is fortuitously exposed along the Chipola River and adjacent tributaries west of Tallahassee. The Chipola Formation is interesting both for the numerous well-preserved mollusks it contains and the range of paleoenvironments exposed within it. It contains one of the most ecologically diverse mollusk faunas in North America, with some 159 species identified to date.

Sunday morning, the group headed westward on State Road 20 with Dr. Vokes for a collecting trip to some of her localities along Farley Creek in Calhoun County. The weather was perfect, and the creek was flowing clear water in a deeply-incised, tree-shrouded stream bed. The fossil hunters soon discovered that, unlike the south Florida shell pit fossils, the Miocene shells often require a lot more digging and screening to find.

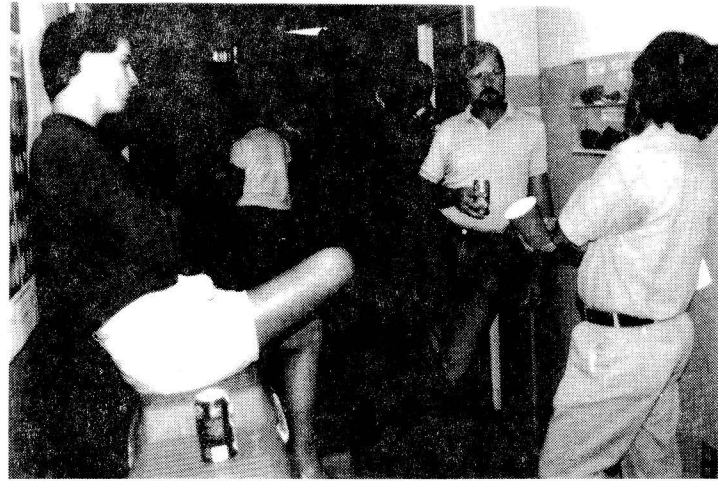
By mid-afternoon, the group began to disband and head homeward. All-told, the weekend was a success, and we hope a good time was had by all.

The following pages of photos illustrate some of the highlights of the Fall Meeting weekend.....

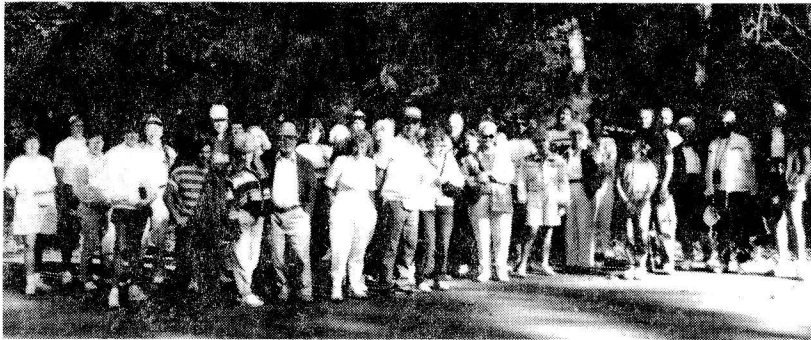
1991 Fall Meeting



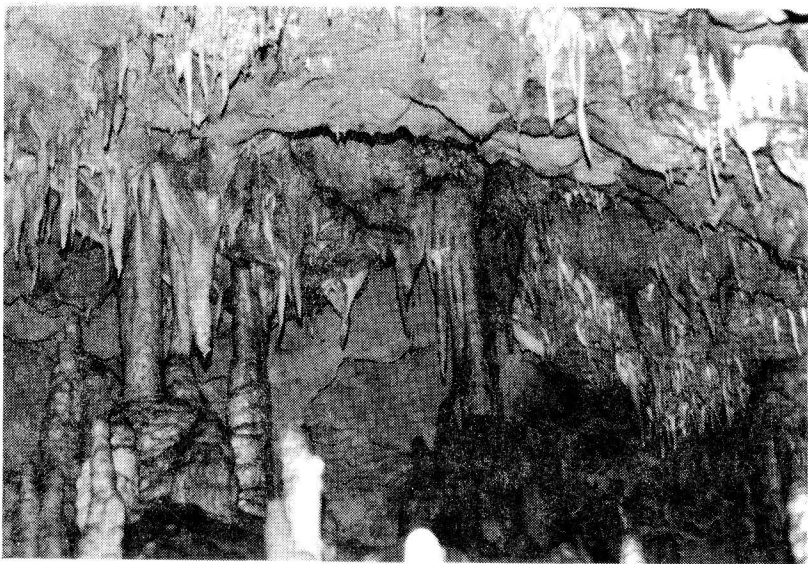
TOURING THE FGS GEOLOGICAL LIBRARY



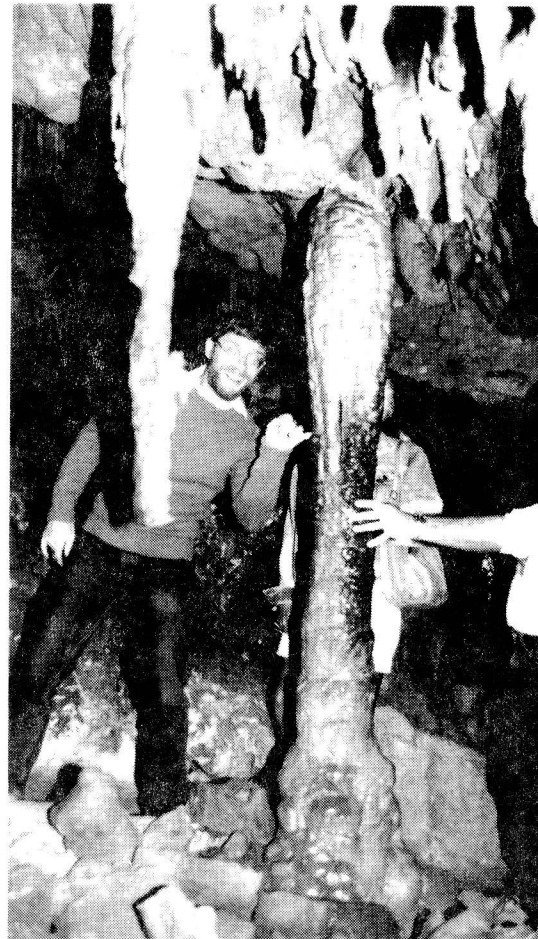
OPEN HOUSE AT THE FLORIDA GEOLOGICAL SURVEY



GROUP SHOT AT FLORIDA CAVERNS



SPELEOTHEMS AT FLORIDA CAVERNS



THE "TOUCHING COLUMN" AT FLORIDA CAVERNS

Highlights



LUNCH AT JACK WINGATE'S LUNKER LODGE



BEHIND THE SCENES AT THE MUSEUM OF FLORIDA HISTORY



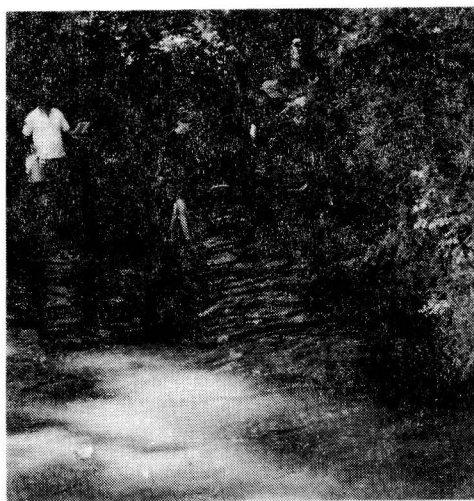
MEMBERS CONTEMPLATE AN ELECTROLYSIS TANK



BANQUET DINNER AT THE FLORIDA STATE CONFERENCE CENTER



HOST SPEAKER DR. EMILY VOKES



ON FARLEY CREEK



DIGGING FOR FOSSILS ALONG FARLEY CREEK

Phillip Whisler Wins 1991 Converse Award

Phil Whisler is the 1991 recipient of the Howard Converse Award for his continued support of the museum collections and donation of important specimens. The Converse Award is presented yearly by the Florida Museum of Natural History to recognize those persons who have made outstanding contributions to further paleontology in the state. Individuals are nominated for the award by the staff and faculty of the Invertebrate and Vertebrate Paleontology and the Paleobotany Divisions. The recipient is then selected from the pool of nominees by three faculty members from the above-mentioned divisions. This year's award was an inscribed plaque adorned with bronze replicas of two of the fossils Phil donated to the museum.



BACK ISSUES OF THE PLASTER JACKET STILL AVAILABLE

Florida Paleontological Society, Inc.
Florida Museum of Natural History
University of Florida
Gainesville, FL 32611

Some of numbers 1-29 are still available free of charge. Please write the Museum with your request. The following numbers are available for \$1.00 each.

<i>Quantity</i>		<i>\$1.00 ea.</i>
_____	No. 30 <i>Fossil Rhinoceroses of Florida</i> , Bruce J. MacFadden.	_____
_____	No. 31 <i>Paleoecology: Ancient communities and Environments</i> , Ronald Wolff	_____
_____	No. 32 <i>Saber-tooth Carnivores</i> , Jon Baskin	_____
_____	No. 34 <i>Collecting Fossil Mammals in the Greater Antilles: An Immense Journey</i> , Charles A. Woods	_____
_____	No. 35 <i>Fiberglass Molding Techniques in Paleontology</i> , Clifford J. Jeremiah	_____
_____	No. 36 <i>Fossil Wolves, Coyotes, and Dogs of Florida</i> , David Fraley	_____
_____	No. 37 <i>The Thomas Farm Fossil Site</i> , S. David Webb	_____
_____	No. 38 <i>Collecting Fossil Mammals in Bolivia: The Southern Connection</i> , Bruce MacFadden	_____
_____	No. 45 <i>A History of Ruminants: Part I</i> , S. David Webb.	_____
_____	No. 46 <i>A History of Ruminants: Part II</i> , S. David Webb.	_____

Total number of books @ \$1.00 each - Total Amount Enclosed _____
ALL ORDERS OF THESE PUBLICATIONS POSTPAID

On a lighter note, one vertebrate fossil enthusiast tells of his...

Vertebrate Misadventures

by Eric G. Taylor

You have to understand that I am a very enthusiastic (even if abysmally ignorant) follower of Florida Paleontology. I have spent days, weeks, even months, tromping up and down hills, grubbing in the bottom of rivers, lakes of mud, and sand flats without end. I have placed my life in danger to pick up a shark's tooth exposed on a sand ridge in the Bone Valley with a 70 foot drop on the other side. I have been surface diving in a river and gotten so excited I forgot to come up for air, spent oodles of money to travel to Utah to look for Dinosaur bones, and have a room in my house my wife refuses to enter because she's afraid of being attacked by some extinct beast.

This obsession with bones has kept me very biased, almost to the point where I wouldn't collect a Florida invertebrate fossil unless I needed a new driveway! Oh sure, I recognize the scientific value of invertebrates in establishing ages and so forth. I've seen interesting and even beautiful shells from many areas. Some of them were even fossils! But quite simply, vertebrate fossils are my one avocation. Therefore, I was initially less than enthusiastic when it was announced that a recent Spring Meeting was to be held at a shell pit. And not just any shell pit, but one a *looong* way from my home in north Florida.

Inquiry revealed that occasionally someone found vertebrate remains in the DeSoto Shell Pit. So I swallowed my doubts and, after a rather severe struggle with my son (who dislikes invertebrates even more than I do!), managed to drag him into the car and we headed for south Florida. In the pouring rain. At Midnight.

We didn't know how far it was to the pit in terms of travel time but decided that getting there early would be best, allowing us to scope out the potential vertebrate fossil areas, and have a better chance of finding something other than "Crunchies and Squishies"! We got there at three o'clock in the morning. In the rain. In the pouring rain. Feeling rather stupid, we checked into a motel.

At 7 AM, after breakfast, we headed for the pit. It was still pouring rain. After considerable wandering (punctuated by claims that my son couldn't read a map if his life depended on it and

by his claims that I couldn't find my ear with both hands and an electronic ear finding machine) we wound up on an endless dirt road in the (you guessed it!) pouring rain.

Several eons (or so it seemed) later we arrived at what we hoped was the DeSoto Shell Pit. It was kind of hard to tell, as seeing very well in the rain was difficult and there didn't seem to be anyone there except for some strangers in hard hats. Parking the van in the mud, we waited. The dog had to get out and almost drowned before he found a straggly looking bush to use. Finally, Bill Webster showed up with several other people, and we decided that since we were there, we might as well see if we could find anything.

The pit attendant wanted us to sign a list on a clipboard. Ever try to sign a piece of notebook paper in the middle of a monsoon? With a pencil stub? Interesting. And the list was probably of no value to anyone as I am sure it disintegrated within two minutes. Anyway, down into the pit we went. I finally convinced my son that the entrance to the pit was not something out of Dante's *Inferno*, despite all the shells. My most convincing argument did (I must admit) involve threats to his future. I also pointed out that it couldn't possibly be Hell, as it was raining much too hard! Still, he did have a point. There were an awful lot of shells!

An hour later we reached the end of the pit. And there, in the very end of the pit, we found some vertebrate remains! Great joy and rejoicing! Not only that, but it had almost stopped raining! Almost. We found we needed better tools, as the wall where the bones were was very hard.

A forty-eight mile walk later (well maybe not quite that far) we were back at the site. The only problem was the site was 10 to 12 feet below us. We had walked back on the edges to avoid the slowly deepening water in the bottom of the pit. The nearest access with a slope to it was about 200 feet away, so I headed for it. I hadn't gone 20 feet when, at the base of a 7 to 8 foot wall, I saw this nice, soft-looking pile of sand. Being a person of great laziness, I decided that dropping onto that sand was much preferable to walking another 150 feet or so. So....I levered my un-svelte body over

the edge of the wall, pushed off, and dropped onto the "sand".

The "sand" sloped gently away from the wall. If it had been sand, I am sure my plan would have worked perfectly! As it turned out, the "sand" was actually a mixture of hard clay and shells! Hard as the heart of an IRS examiner. When my feet hit it, they went straight out from under me and ended up about shoulder-high. The rest of my precious self landed full force on the next part of the body encountered while travelling downwards. The point of my spine attempted to become one with a buried shell. My breath left my body, not because I had it knocked out by the fall, but as part of one of the loudest noises ever heard in south Florida! I understand that my scream of pain caused the water in Lake Okeechobee to rise several inches, and the Kissimmee River to run backwards for a couple of hours!

The rest of the day was par for the course. We almost drowned in the rising waters in the bottom of the pit while trying to dig what we

thought was a camel leg out of the closest thing to concrete I have ever seen in Florida. One person found a bunch of horse teeth and glyptodont scutes while looking for shells in a spot we suggested to him! He asked what kind of shells they were! All of our clothing and shoes were ruined, and the ride home was accompanied by the worst pain in my...well, you know, I have ever experienced. To top it all off, the fossils we dug out of the wall following my fall turned out to be a horribly wrecked pair of alligator vertebrae that no one in his right mind would save!

Such is often the experience of the die-hard fossil hunter, I know. I have nothing against invertebrate enthusiasts, and hope that those who attended had a good day. Especially those lucky dogs who did not show up until the rain quit! As for me, I must chalk this trip up to fate. The next time someone suggests going to a shell pit for a meeting of the FPS, I will naturally hesitate and give it considerable thought. But being the fossil-lover that I am, I will undauntedly go again, hoping for better luck in my next adventure. □

REMINDER! 1992 DUES ARE DUE BY DEC. 31, 1991
NOW IS THE TIME TO JOIN OR RENEW! All delinquent members will be purged from the next published membership list.

FLORIDA PALEONTOLOGICAL SOCIETY, INC. Renewal
MEMBERSHIP REGISTRATION New Member

Name _____

Member No. (from label) _____ Phone: _____/_____

Street Address: _____

City: _____ State: _____ Zip: _____

Membership in the Society is Annual - January 1 through December 31

CHECK THE APPROPRIATE CATEGORY:		DUES:
<input type="checkbox"/>	ACTIVE MEMBER	\$10.00
<input type="checkbox"/>	ASSOCIATE MEMBER (under 18 years)	\$ 5.00
<input type="checkbox"/>	INSTITUTION (no vote)	\$10.00
<input type="checkbox"/>	SUBSCRIBER (publications only)	\$10.00

Send this form with your dues to: Florida Paleontological Society, Inc.
Florida Museum of Natural History
University of Florida
Gainesville, FL 32611

Date: _____ Signature: _____



florida paleontological society, inc.

Florida Museum Of Natural History
University Of Florida Gainesville, Florida 32611

MINUTES FALL GENERAL MEETING FLORIDA PALEONTOLOGICAL SOCIETY INC.

The Fall Meeting of the Florida Paleontological Society, Inc. was called to order by President William Webster in the Florida State Conference Center in Tallahassee, Florida at 5:30 PM on 10/12/91.

The Minutes of the Board of Director's meeting on March 2, 1991 were approved as published in the Newsletter.

Kevin Schindler's Treasurer's report was passed around to all attendees and was accepted by the membership.

The Book Committee's report was presented by Vice-President Roger Portell.

Following the Board meeting in March, further research indicated that the plan previously approved to have the book published by the Society was unlikely to be workable. Dr. Webb had a long conversation with Dr. Robin Brown who shared his personal experiences with having a book published. As a result of that conversation and the additional details he obtained from the publisher, Dr. Webb felt that using a commercial publishing house would greatly benefit the Society. He contacted Board members by telephone and in person and the change in concept was approved.

When "Florida Fossil Vertebrates" author Dr. Richard Hulbert was advised of the new plan, he brought up some concerns that the Board had not addressed. About the same time, Dr. Webb resigned as chairman of the book committee because of time constraints.

After some discussion, it was decided that the matter should be referred to the Board of Directors for determination of the best course of action at this time. The Board was directed to establish the completion of the book as first priority.



florida paleontological society, inc.

Florida Museum Of Natural History
University Of Florida Gainesville, Florida 32611

The Meeting Committee report was presented by Sue Pendergraft.

Current plans are to hold the Spring Meeting in 1992 at the Silver River Educational and Environmental Center in Ocala. Dates and activities will be announced. There appears to be much support for this suggestion!

New Business

Kevin Schindler moved that an honorary membership be granted to Anita Brown in recognition of her many years of dedicated service to the Society and to the cause of Science. This motion was passed by acclamation.

Dr. Bruce MacFadden presented a concept to the Society for the establishment of the position of "State Paleontologist." He views this position as being filled by a qualified amateur without ties to any specific group. The job would include, but not be limited to:

1. Visit with and provide a coordination point between the various components of the field of Paleontology at the State and local level, with particular emphasis on coordination between local clubs and the State level organizations.
2. Establish fund raising programs to benefit Paleontological activities throughout the State of Florida.
3. Visit and evaluate newly discovered fossil sites.
4. Provide a source for identification of paleontological materials and a means of getting items beyond his capabilities into the hands of those who can help.
5. Coordinate with environmental, construction and governmental agencies over the impact upon Paleontological resources by these agencies.
6. Other duties as may be developed by the FPS.

Two special areas of concern Dr. MacFadden addressed were those dealing with control and financing. He made it clear that the person holding this position would not be subject to direction by the Florida Museum of Natural History and that it was intended that he ultimately become a State Employee who would, in effect, raise his own salary.

Following extensive discussion, Dr. Douglas Jones moved that the matter be referred to the Executive Board for further exploration of the concept. This motion carried.



florida paleontological society, inc.

Florida Museum Of Natural History
University Of Florida Gainesville, Florida 32611

For the information of the general Society membership, Eric Taylor discussed the status of the effort to have the Museum or the University of Florida acquire title to the fossiliferous locality of the "Moss Acres" horse farm site in Marion county.

Over the past six years, this site has produced some of the highest quality large Vertebrate fossils ever seen. Included are both Rhino remains and a new species of giant shovel-tusked gomphthere both of which the Museum hopes to mount for public display.


As it currently stands, a concept has been developed that would allow the present owners to donate the fossil site without damaging the value of the rest of the farm. Before it can be taken to the owners, two things are needed. First, a survey to establish the total volume of the site (surface area and depth of deposit) and, secondly, Dr. David Webb needs to appoint someone to act on his behalf while he is on sabbatical.

As neither of these requirements are under the control of the FPS, the Board of Directors was directed to monitor the situation and to be prepared to assist if required.

There being no other new business, Eric Taylor reported that the slate of officers suggested by the nominating committee for 1991-1992 had been overwhelmingly elected by ballots mailed in by the membership. A motion was made to consider those persons on that slate as elected and was passed.

There being no further business, the meeting was adjourned at 6:50 PM 10/12/91.

Respectfully submitted,


Eric G. Taylor
Secretary



florida paleontological society, inc.

Florida Museum Of Natural History
University Of Florida Gainesville, Florida 32611

Minutes
Florida Paleontological Society Inc.
Board of Directors Meeting
10/12/91 and 10/13/91

The meeting of the Board of Directors of the Florida Paleontological Society Inc. was called to order at 6:50 PM 10/12/91 at the Florida State Conference Center in Tallahassee Florida immediately following the general membership meeting.

Attendees were:

Jim Pendergraft- President
Bill Webster- Past President
Frank Ruppert-President Elect
Rudi Johnson-Vice President
Eric Taylor- Secretary
Kevin Schindler- Treasurer
Dr. Gordon Hubbell- Board Member
Phil Whisler- Board Member
Roger Portell-Board Member
Sue Pendergraft-Board Member
Dr. Bruce MacFadden-Board Member
Anita Brown- Honorary Member
Dr. Douglas Jones-Museum Representative
Gary Morgan

The following re-assignments were made to standing committees-

By Laws-Eric Taylor
Book Committee-Gary Morgan

By unanimous consent and with the stated desire of the general membership as guidance, the President was directed to send a letter to Richard Hulbert asking him to finish the book "Florida's Fossil Vertebrates" to his satisfaction as rapidly as possible and advising him of our intention to approach non-profit sources to have the book printed.

As the banquet was due to start, the meeting was adjourned until 10/13/91 at 7:00 AM at the Holiday Inn.

The meeting was convened at 7:00 AM in the dining room of the Holiday Inn in Tallahassee. All previous attendees were present as was FPS member Dr. Robin Brown.



FLORIDA PALEONTOLOGICAL SOCIETY, INC.

Florida Museum Of Natural History
University Of Florida Gainesville, Florida 32611

The project regarding the attempt to have the "Moss Acres" site donated to the FIMNH was discussed. Eric Taylor stated that the Florida Geological Survey had said that they would take rough core samples in early November if the museum would request them. All were directed to attempt to contact David Webb as soon as possible to have him make a decision on his representative as soon as possible. It was agreed that no further action could be carried out until these two items were complete.

Dr. MacFadden's concept of attempting to establish a position for a "State Paleontologist" was then discussed. Following extensive discussion, Eric Taylor moved that the Board accept the concept in general and ask that Dr. MacFadden's ideas be presented in written form and more detail. This motion was seconded by Doug Jones and passed.

A committee was formed to receive this written report and to begin to evaluate the possibility of FPS providing the seed money for the project, develop the concept fully, and present a report to the full board. The committee consists of:


Dr. Gordon Hubble- Chairman
Susan Pendergraft
Eric Taylor
Rudi Johnson
Gary Morgan
Phil Whisler
Anita Brown
Bill Webster
Dr. Bruce MacFadden

This committee is to meet at the FIMNH conference room at 9:00AM 11/23/91.

Anita Brown brought up her conversations with Margaret Thomas regarding the marketing and update of "Beach and Bank Collecting for Amateurs". The Board agreed to finance the marketing and re-introduction of the book and to provide assistance towards the updating of this fine publication.

There being no further business, the meeting was adjourned at 8:00 AM.

Respectfully submitted,


Eric G. Taylor
Secretary

FLORIDA PALEONTOLOGICAL SOCIETY, INC
REVENUE AND EXPENSE REPORT
28 October 1990 - 11 October 1991

REVENUE		
MEMBERSHIP DUES		\$3,420.00
SALES		
Publications		
<i>Beach and Bank Collecting</i>		4,348.38
<i>Handbook of Paleo Preparation</i>		879.30
<i>Plaster Jacket</i>		171.00
<i>Papers in Florida Paleontology</i>		33.00
Butvar		498.50
Miscellaneous		
Fall 1991 Meeting Registration		1,100.00
Donations		30.00
	Total Revenue	<u>\$10,481.18</u>
EXPENSES		
Publications		
<i>Beach and Bank Collecting</i>		2,988.52
Newsletter		400.00
Postage		719.54
Miscellaneous		
Fall 1990 Meeting		353.00
State Filing Fee		61.25
Office Supplies		286.34
Other		19.73
	Total Expenses	<u>\$4,828.38</u>
	Income Over (Under) Expenses	\$5,652.80

STATEMENT OF ASSETS
11 October 1991

ASSETS		
CASH		
Checking		\$7,326.88
Saving		10,774.83
Credit		65.43
	Total Cash and Credit	<u>\$18,167.14</u>
INVENTORY		
<i>Beach and Bank Collecting (1822 @ \$2.50)</i>		4,555.00
<i>Handbook of Paleo Prep. (522 @ \$6.50)</i>		3,393.00
<i>Papers in Florida Paleontology (475 @ \$3.00)</i>		1,425.00
<i>Plaster Jacket (3490 @ \$1.00)</i>		3,490.00
<i>Butvar (84 lbs. @ \$7.50)</i>		630.00
<i>T-Shirts (3 @ \$7.00)</i>		21.00
	Total Inventory	<u>\$13,514.00</u>
	Total Assets	\$31,681.14

FLORIDA PALEONTOLOGICAL SOCIETY, INC.

As stated in the Articles of Incorporation, "The purposes of this Corporation shall be to advance the science of Paleontology, especially in Florida, to disseminate knowledge of this subject and to facilitate cooperation of all persons concerned with the history, stratigraphy, evolution, ecology, anatomy, and taxonomy of Florida's past fauna and flora. The Corporation shall also be concerned with the collection and preservation of Florida fossils." (Article III, Section 1).

CODE OF ETHICS

ARTICLE IX

- Section 1. Members of the Florida Paleontological Society, Inc., are expected to respect all private and public properties.
- Section 2. No member shall collect without appropriate permission on private or public properties.
- Section 3. Members should make a sincere effort to keep themselves informed of laws, regulations, and rules on collecting on private or public properties.
- Section 4. Members shall not use firearms, blasting equipment, or dredging apparatuses without appropriate licenses and permits.
- Section 5. Members shall dispose of litter properly.
- Section 6. Members shall report to proper state offices any seemingly important paleontological and archaeological sites.
- Section 7. Members shall respect and cooperate with field trip leaders or designated authorities in all collecting areas.
- Section 8. Members shall appreciate and protect our heritage of natural resources.
- Section 9. Members shall conduct themselves in a manner that best represents the Florida Paleontological Society, Inc.

ANNUAL DUES for the FPS are \$5.00 for Associate Membership (persons under age 18) and \$10.00 for Full Membership (persons over age 18) and Institutional Subscriptions. Persons interested in FPS membership need only send their names, addresses, and appropriate dues to the Secretary, Florida Paleontological Society, Inc., at the address inside the front cover. Please make checks payable to the FPS. Members receive a membership card, the FPS newsletter, the Papers in Florida Paleontology, and other random publications entitled to members.

NEWSLETTER POLICY: All worthy news items, art work, and photographs related to paleontology and various clubs in Florida are welcome. The editors reserve the right not to publish submissions and to edit those which are published. Please address submissions to the Editors, Florida Paleontological Society, Inc. Newsletter, at the address inside the front cover.