

PLATE 4**Families Diogenidae (left-handed hermit crabs) and Raninidae (frog crabs)**

- A) *Petrochirus diogenes* (Linnaeus, 1758); UF 103549; outer view of right dactylus; 2x.
- B) *Petrochirus diogenes* (Linnaeus, 1758); UF 103549; ventral view of right dactylus; 2x.
- C) *Petrochirus diogenes* (Linnaeus, 1758); UF 103550; dorsal view of fixed finger view; 1.5x.
- D) *Petrochirus diogenes* (Linnaeus, 1758); UF 103550; ventral view of fixed finger; 1.5x.
- E) *Ranilia* sp.; UF 110842; dorsal view of carapace; 2x.
- F) *Ranilia* sp.; UF 110842; lateral view of carapace; 2x.
- G) *Ranilia* sp.; UF 110842; frontal view of carapace; 2x.

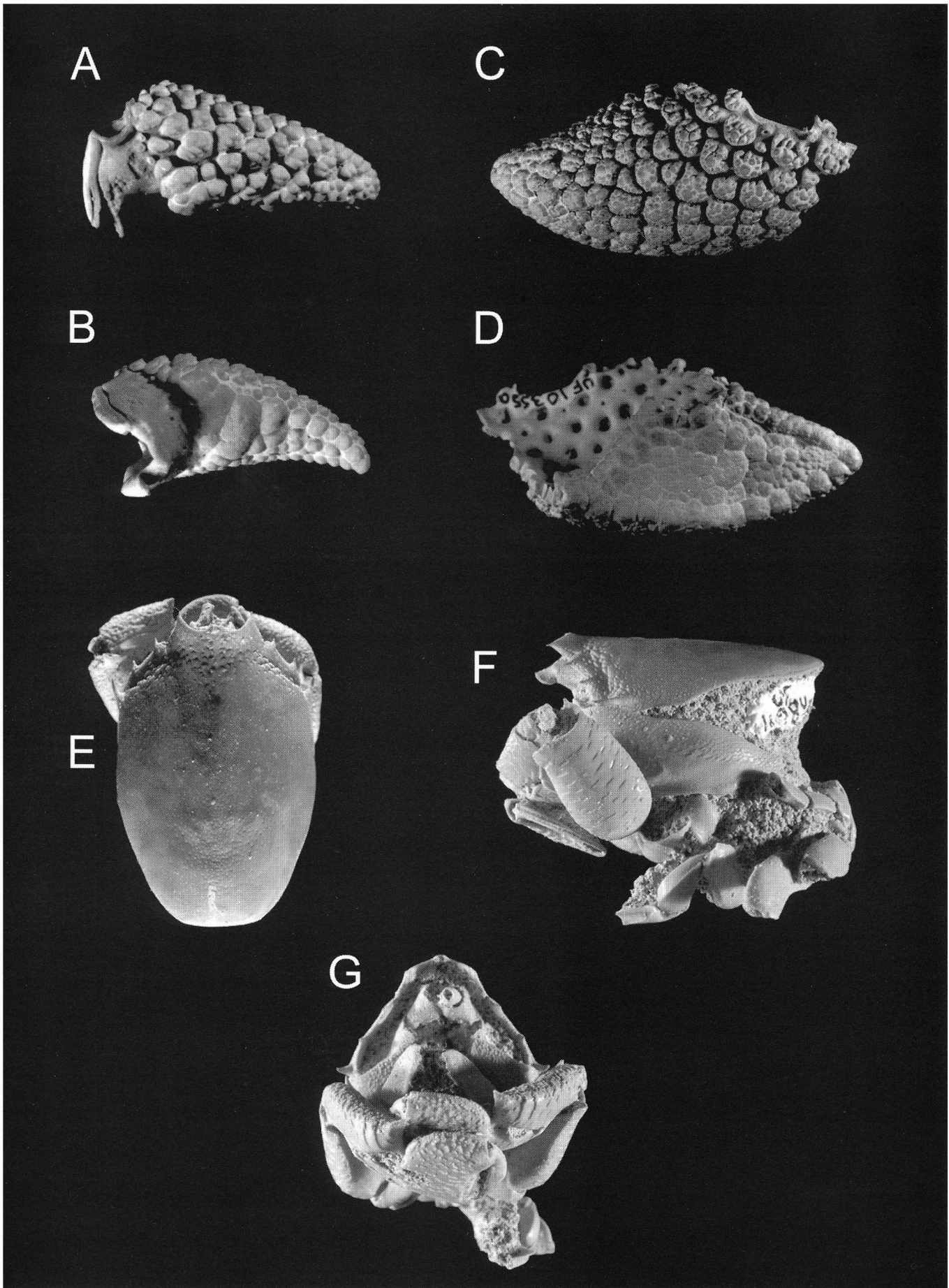


PLATE 5**Families Calappidae and Hepatidae (box crabs) and Leucosiidae (purse crabs)**

- A) *Calappa* sp.; UF 103546; outer view of right major dactylus; 2x.
- B) *Calappa* sp.; UF 103546; inner view of right major dactylus; 2x.
- C) *Calappa* sp.; UF 101446; outer view of left minor dactylus; 2x.
- D) *Calappa* sp.; UF 101446; inner view of left minor dactylus; 2x.
- E) *Hepatus* sp.; UF 101091; outer view of left dactylus; 4x.
- F) *Hepatus* sp.; UF 101091; inner view of left dactylus; 4x.
- G) *Persephona mediterranea* (Herbst, 1794); UF 104495; dorsal carapace; 1.5x.
- H) *Persephona mediterranea* (Herbst, 1794); UF 104495; inner view of left major cheliped (propodus, carpus, and merus in articulation); 1.5x.
- I) *Persephona mediterranea* (Herbst, 1794); UF 104495; outer view of left major cheliped (propodus, carpus, and merus in articulation); 1.5x.

Note: Gerd Wachno (Germany) kindly donated UF 104495 for inclusion in this publication.

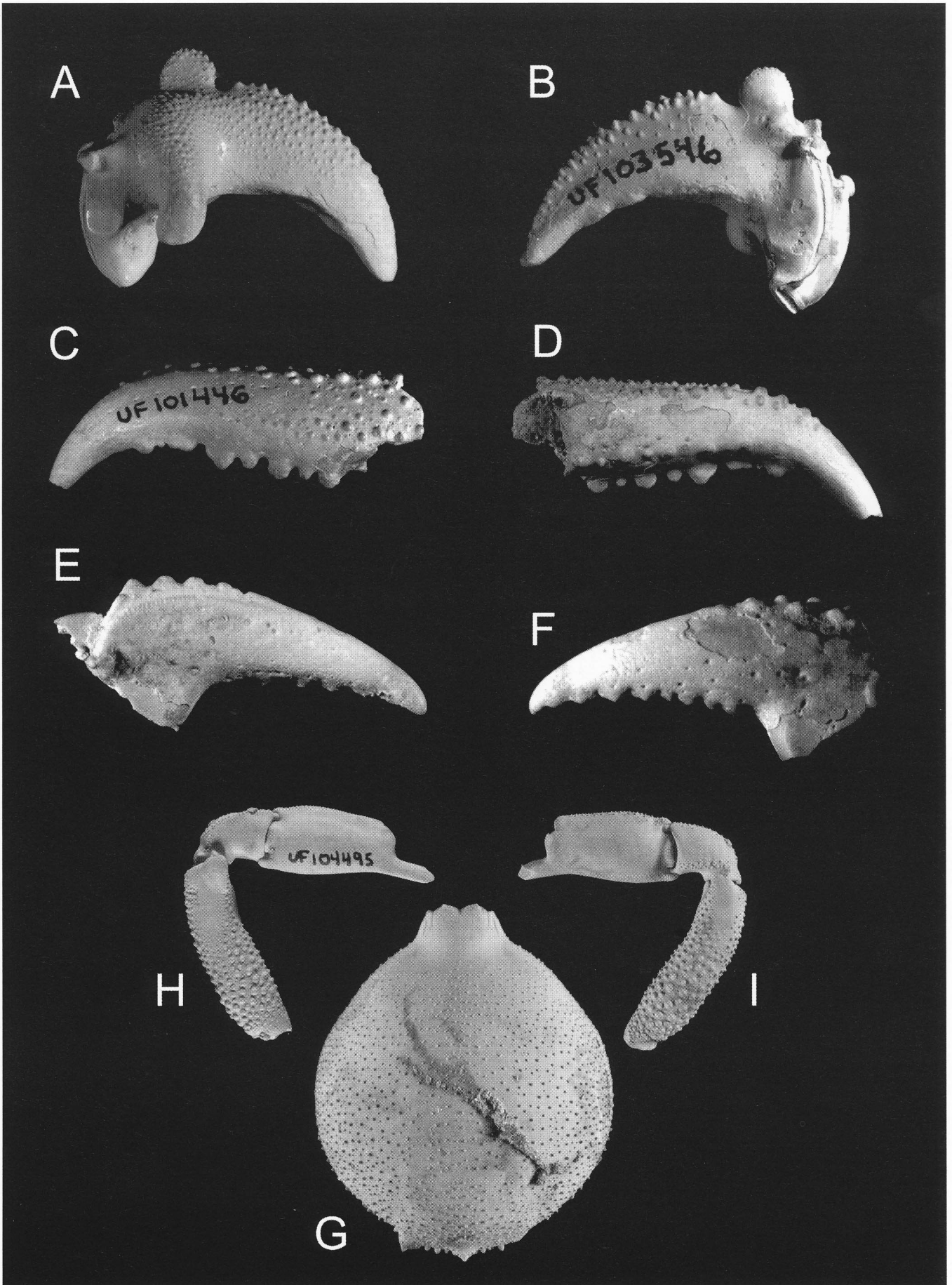


PLATE 6**Families Majidae (spider crabs) and Parthenopidae (elbow crabs)**

- A) *Libinia* sp.; UF 101449; outer view of left propodus; 1.5x.
- B) *Parthenope granulata* (Kingsley, 1879); UF 61461; dorsal view of Recent carapace (collected in the Straits of Florida off Monroe County) for comparison with fossils in figures C-F; 1.5x.
- C) *Parthenope charlottensis* Rathbun, 1935; UF 40355; outer view of left propodus; 1.5x.
- D) *Parthenope charlottensis* Rathbun, 1935; UF 40355; inner view of left propodus; 1.5x.
- E) *Parthenope charlottensis* Rathbun, 1935; UF 57073; inner view of right merus; 1.5x.
- F) *Parthenope charlottensis* Rathbun, 1935; UF 57073; outer view of right merus; 1.5x.

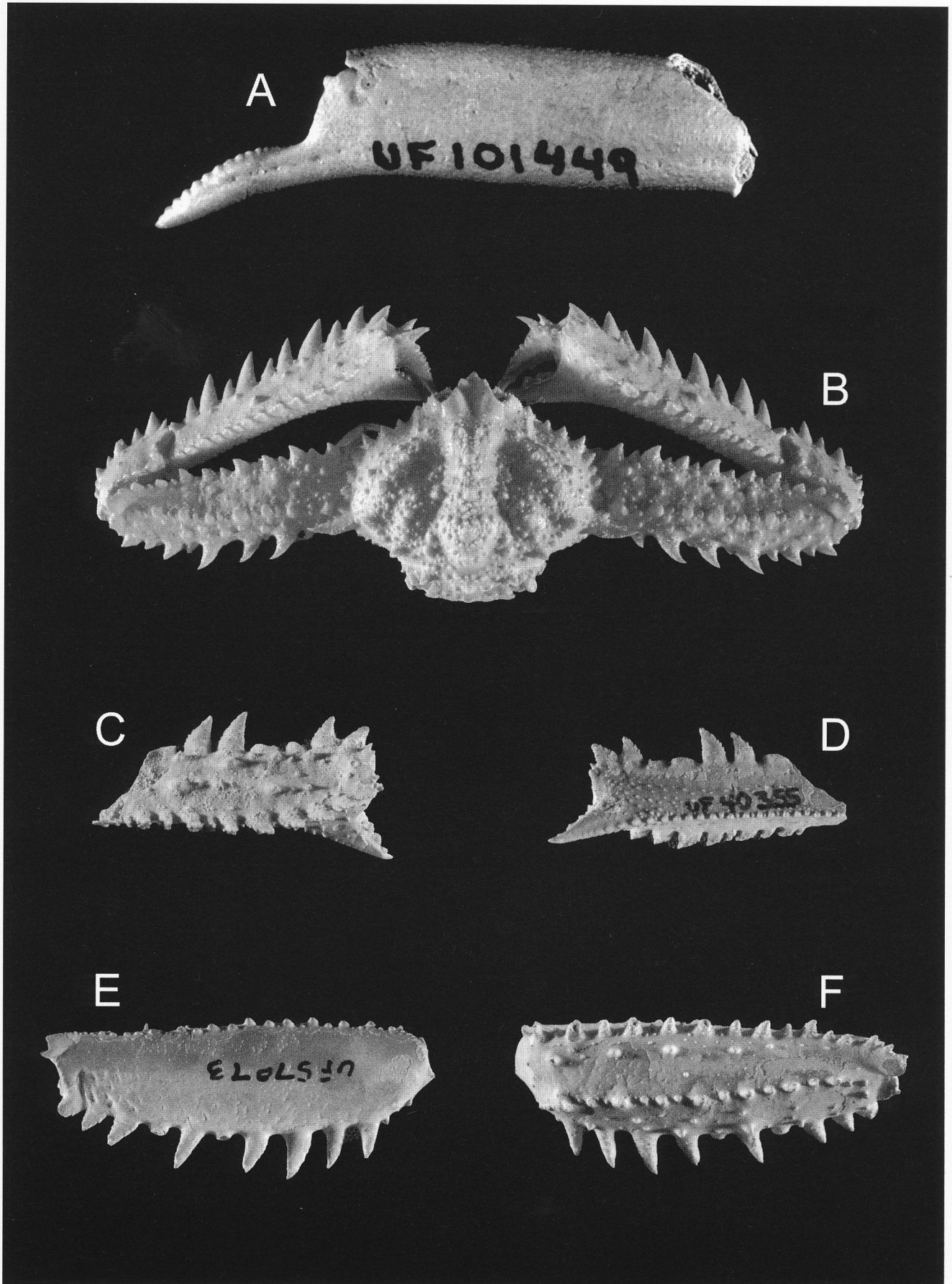


PLATE 7**Families Cancridae (rock crabs) and Portunidae (swimming crabs)**

- A) *Ovalipes stephensoni* Williams, 1976; UF 101155; inner view of left dactylus; 2x.
- B) *Ovalipes stephensoni* Williams, 1976; UF 101155; dorsal view of left dactylus; 2x.
- C) *Portunus depressifrons* (Stimpson, 1859); UF 103526; outer view of right propodus; 3x.
- D) *Portunus depressifrons* (Stimpson, 1859); UF 103526; inner view of right propodus; 3x.
- E) *Portunus depressifrons* (Stimpson, 1859); UF 102773; outer view of right dactylus; 6x.
- F) *Portunus depressifrons* (Stimpson, 1859); UF 102773; inner view of right dactylus; 6x.
- G) *Portunus gibbesii* (Stimpson, 1859); UF 103527; outer view of right dactylus; 3x.
- H) *Portunus gibbesii* (Stimpson, 1859); UF 103527; inner view of right dactylus; 3x.
- I) *Portunus spinimanus* Latreille, 1819; UF 107723; outer view of right dactylus; 3x.
- J) *Portunus spinimanus* Latreille, 1819; UF 107723; inner view of right dactylus; 3x.

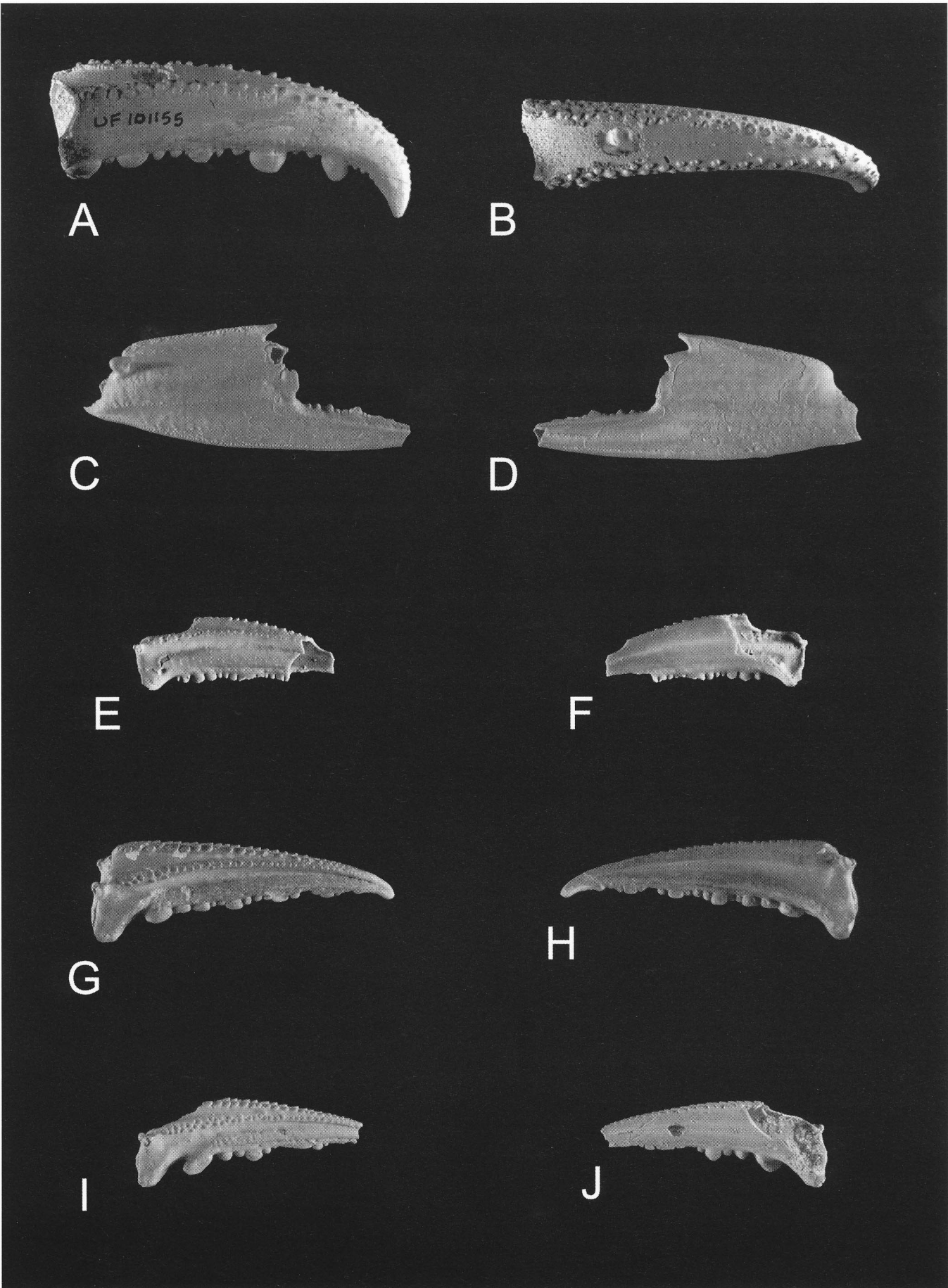


PLATE 8**Family Menippidae (stone crabs)**

- A) *Menippe floridana* Rathbun, 1935; USNM 371718 (Holotype); image from Rathbun, 1935, plate 22, figure 1; inner view of left dactylus; 1x.
- B) *Menippe floridana* Rathbun, 1935; USNM 371718 (Holotype); image from Rathbun, 1935, plate 22, figure 2; outer view of left dactylus; 1x.
- C) *Menippe mercenaria* (Say, 1818); UF 3276; view dorsal carapace exhibiting numerous compression fractures; 1x.
- D) *Menippe mercenaria* (Say, 1818); UF 3276; frontal view of carapace with the right major cheliped visible; 1x.
- E) *Menippe mercenaria* (Say, 1818); UF 3276; ventral view of carapace with several walking legs visible; 1x.

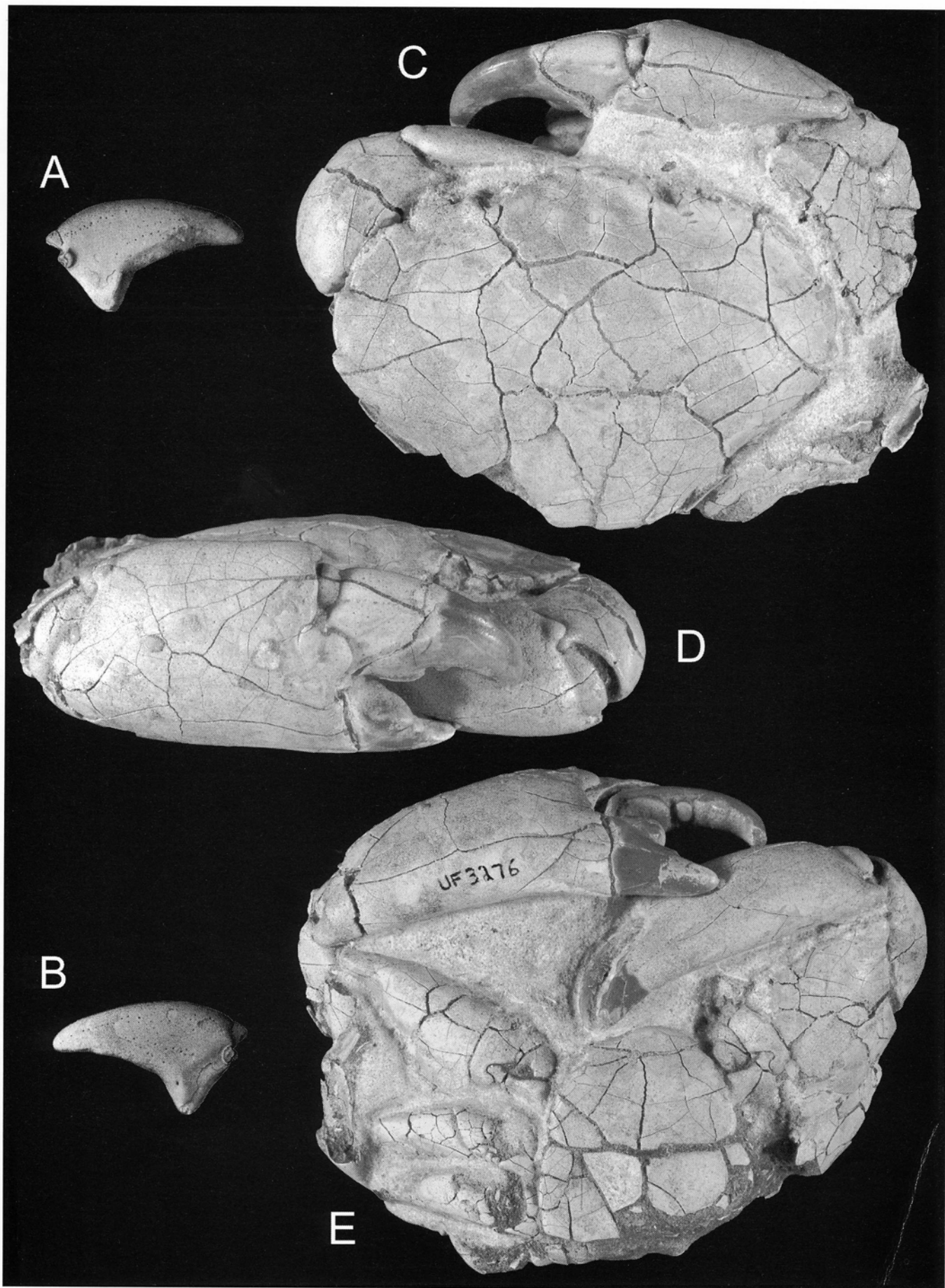


PLATE 9**Families Pilumnidae (mud crabs), Pinnotheridae (pea crabs),
and Ocypodidae (ghost crabs)**

- A) *Pilumnus* sp.; UF 101125; inner view of right major dactylus; 5x.
- B) *Pinnixa* sp.; UF 103677; inner view of right dactylus; 4x.
- C) *Ocypode quadrata* (Fabricius, 1787); UF 48301; dorsal view of Recent carapace (collected from Satellite Beach, Brevard County, Florida) for comparison with fossils in figures D-E; 1x.
- D) *Ocypode quadrata* (Fabricius, 1787); UF 48195; dorsal view of carapace with thin, coating of coquina. Left dactylus and small portion of carapace exposed; 1x.
- E) *Ocypode quadrata* (Fabricius, 1787); UF 47573; dorsal view of carapace showing increased thickening of coquina and increased abrasion from rolling in the surf; 1x.
- F) *Uca* sp.; UF 107741; outer view of right major dactylus; 4x.

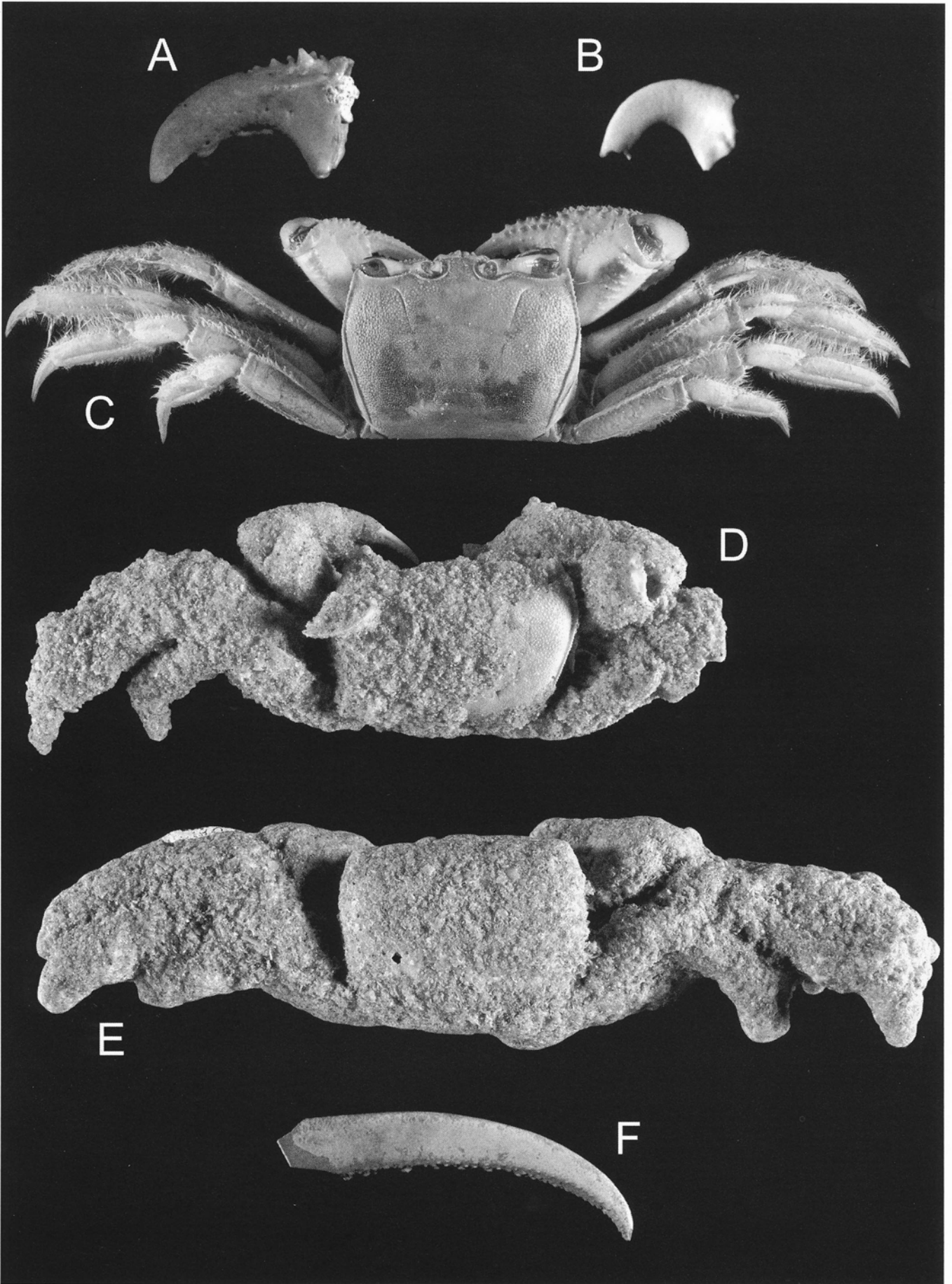


Table 1. Species list of described or reported (but as yet undescribed) Florida Pliocene and Pleistocene decapod crustaceans with families arranged in systematic order following Martin and Davis (2001), and with genera and species listed alphabetically. Each species denoted occurs in either the Pliocene or Pleistocene, with several taxa occurring in both epochs. Reported stratigraphic occurrence for each species is listed (if known), and for some, a brief synonymy (an older name no longer in use) is provided. An asterisk (**) indicates the record as problematic or doubtful; therefore no image appears in this publication. However, for completeness, these reports were included.

Callianassidae

Callichirus islagrande (Schmitt, 1935).

Stratigraphic Occurrence: Bermont Formation.

Callichirus major (Say, 1818).

Stratigraphic Occurrence: Caloosahatchee and Bermont formations.

Neocallichirus sp.

Stratigraphic Occurrence: Bermont Formation.

Neotrypea sp.

Stratigraphic Occurrence: Caloosahatchee and Bermont formations.

Sergio trilobatus (Biffar, 1970).

Stratigraphic Occurrence: Caloosahatchee and Bermont formations.

Ctenochelidae

Ctenocheles sp.

Stratigraphic Occurrence: Bermont Formation.

Upogebiidae

Upogebia affinis (Say, 1818).

Stratigraphic Occurrence: Bermont Formation.

Synonymy: *Gebia affinis* Say, 1818.

Porcellanidae

Petrolisthes myakkensis Bishop and Portell, 1989.

Stratigraphic Occurrence: Tamiami Formation.

Diogenidae

***Petrochirus bouvieri* Rathbun, 1918.

Stratigraphic Occurrence: Caloosahatchee Formation and possibly Jackson Bluff Formation.

Petrochirus diogenes (Linnaeus, 1758).

Stratigraphic Occurrence: Bermont Formation

Raninidae

Ranilia sp.

Stratigraphic Occurrence: Intracoastal Formation.

Calappidae

Calappa spp.

Stratigraphic Occurrence: Tamiami, Intracoastal, Jackson Bluff, Caloosahatchee, Nashua, Bermont, and Anastasia formations.

Hepatidae

Hepatus sp.

Stratigraphic Occurrence: Bermont Formation.

Leucosiidae

Persephona mediterranea (Herbst, 1794).

Stratigraphic Occurrence: Caloosahatchee and Bermont formations.

Majidae

***Euprognatha* sp.

Stratigraphic Occurrence: Unknown (possibly Jackson Bluff Formation).

Libinia sp.

Stratigraphic Occurrence: Caloosahatchee and Bermont formations.

Parthenopidae

Parthenope charlottensis Rathbun, 1935.

Stratigraphic Occurrence: Caloosahatchee Formation.

Cancridae

***Cancer irroratus* Say, 1817.

Stratigraphic Occurrence: Unknown (possibly Miami Limestone).

Portunidae

Ovalipes stephensoni Williams, 1976.

Stratigraphic Occurrence: Caloosahatchee and Bermont formations.

Portunus depressifrons (Stimpson, 1859).

Stratigraphic Occurrence: Bermont Formation.

Portunus gibbesii (Stimpson, 1859).

Stratigraphic Occurrence: Caloosahatchee and Bermont formations.

Portunus spinimanus Latreille, 1819.

Stratigraphic Occurrence: Bermont Formation.

Menippidae

Menippe floridana Rathbun, 1935.

Stratigraphic Occurrence: Jackson Bluff Formation.

Menippe mercenaria (Say, 1818).

Stratigraphic Occurrence: Ft. Thompson and Caloosahatchee formations.

***Menippe nodifrons* Stimpson, 1859.

Stratigraphic Occurrence: Caloosahatchee Formation.

Pilumnidae*Pilumnus* sp.

Stratigraphic Occurrence: Bermont Formation.

Pinnotheridae*Pinnixa* sp.

Stratigraphic Occurrence: Bermont Formation.

Ocypodidae*Ocypode quadrata* (Fabricius, 1787).

Stratigraphic Occurrence: Anastasia Formation.

Synonymy: *Ocypode albicans* Bosc, 1801-1802.*Uca* sp.

Stratigraphic Occurrence: Bermont Formation.

REFERENCES CITED

- Agnew, J. G. 2001. Taxonomy, taphonomy, and paleoecology of the Plio-Pleistocene shell beds at 101 Ranch Pit, Okeechobee County, Florida. Unpublished Master of Science Thesis, 218 p.
- Agnew, J. G., R. W. Portell, and D. S. Jones. 1999. Occurrence and significance of an early Pleistocene decapod crustacean fauna from southern Florida. Geological Society of America, Southeastern Section, Abstracts with Program, 31(3): 1.
- Agnew, J. G., R. W. Portell, and D. S. Jones. 2000. Concentrated decapod fragments from a Plio-Pleistocene molluscan sequence of northern Okeechobee County, Florida. Geological Society of America, Southeastern Section, Abstracts with Program, 32(2): 2.
- Agnew, J. G., R. W. Portell, D. S. Jones, and C. M. Tang. 2001. The significance of highly variable concentrations of decapod fingers: a comparison of the paleoecology, taphonomy, and sedimentology of several American Neogene deposits. North American Paleontological Convention 2001, Program and Abstracts. *PaleoBios*, 21(2): 21
- Bishop, G. A. 1986. Taphonomy of the North American decapods. *Journal of Crustacean Biology*, 6: 326-355.
- Bishop, G. A. and R. W. Portell. 1989. Pliocene crab-sea star association from southwest Florida. *Journal of Crustacean Biology*, 9(3): 453-458.

- Campbell, M. R., Campbell, D. C., Campbell, L. D., and R. W. Portell. 1997. Distribution and Paleocology of *Glottidia inexpectans* Olsson, 1914 (Brachiopoda: Lingulidae). *Tulane Studies in Geology and Paleontology*, 30(3): 159-170.
- Glaessner, M. F. 1969. In R. C. Moore (editor), *Treatise on invertebrate paleontology*, Part R, Arthropoda 4(2): R399-R533, R626-R628, University of Kansas and Geological Society of America, Incorporated.
- Morgan, G. S. and R. W. Portell. 1996. The Tucker Borrow Pit: Paleontology and stratigraphy of a Plio-Pleistocene fossil site in Brevard County, Florida, 7: 1-25.
- Portell, R. W., G. H. Means, and T. M. Scott. 2003a. Exceptional preservation and concentration of whole-body *Ranilia* (Decapoda: Raninidae) in the Pliocene Intracoastal Formation of Florida. *Geological Society of America, Southeastern Section, Abstracts with Program*, 35(1): 68-69.
- Portell, R. W. and K. S. Schindler. 1991. *Menippe mercenaria* (Decapoda: Xanthidae) from the Pleistocene of Florida. *Papers in Florida Paleontology*, 3: 1-8.
- Portell, R. W., K. S. Schindler, and D. Nicol. 1995. Biostratigraphy and paleoecology of the Pleistocene invertebrates from the Leisey shell pits, Hillsborough County, Florida. *Bulletin of the Florida Museum of Natural History*, 37(1): 127-164.
- Portell, R. W., R. L. Turner, and J. L. Beerensson. 2003b. Occurrence of the Atlantic ghost crab *Ocypode quadrata* from the Upper Pleistocene to Holocene Anastasia Formation of Florida. *Journal of Crustacean Biology*, 23(3): 712-722.
- Rathbun, M. J. 1935. Fossil Crustacea of the Atlantic and Gulf Coastal Plain. *Geological Society of America Special Papers*, 2: 160 p.
- Ross, A. 1963. Paleocology of a Florida Pamilco (Late Pleistocene) Fauna. *The Compass*, 40(4): 228-241.
- Williams, A. B. 1984. Shrimps, lobsters, and crabs of the Atlantic coast of the eastern United States, Maine to Florida. *Smithsonian Institution Press, Washington, D.C.*, 550 p.