

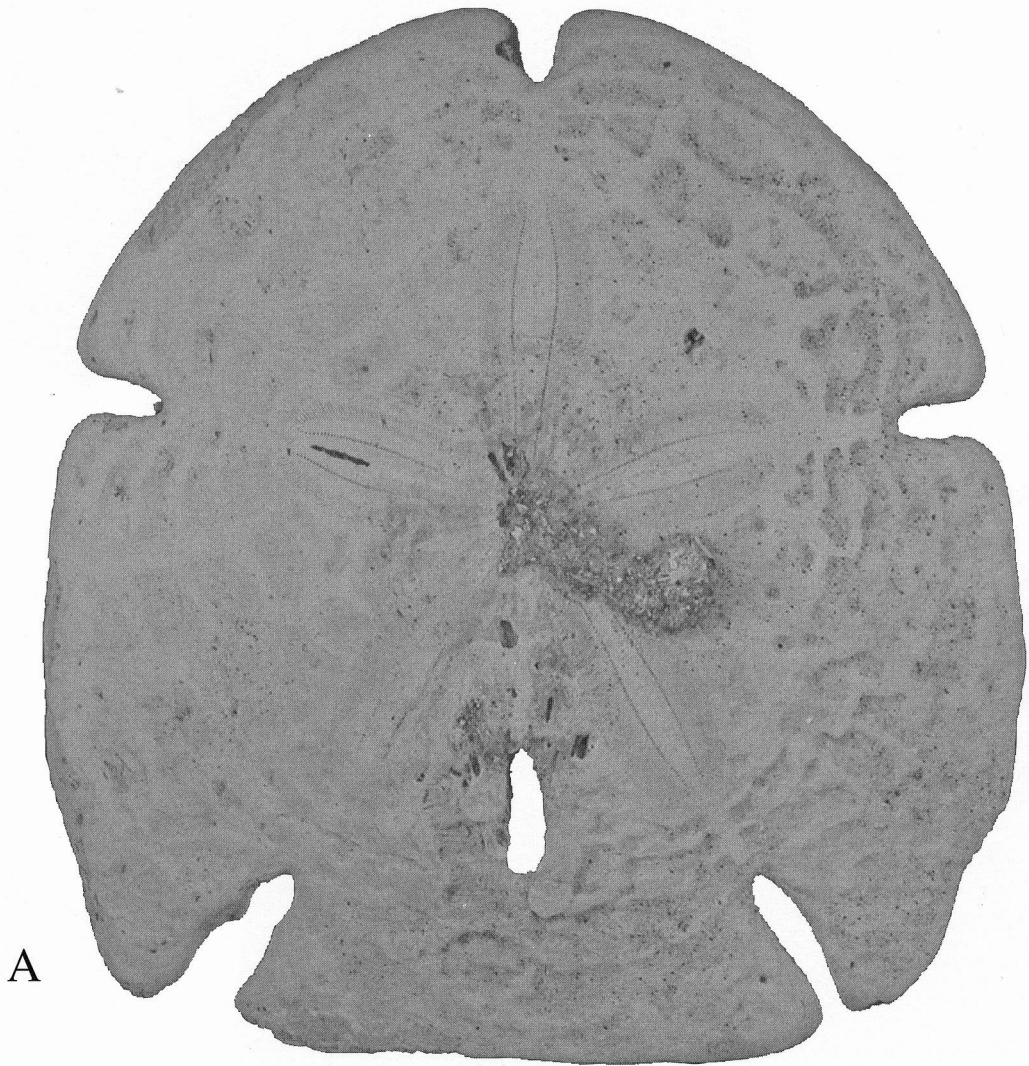
A



B

PLATE 5 (PLIOCENE AND/OR PLEISTOCENE ECHINOIDS)

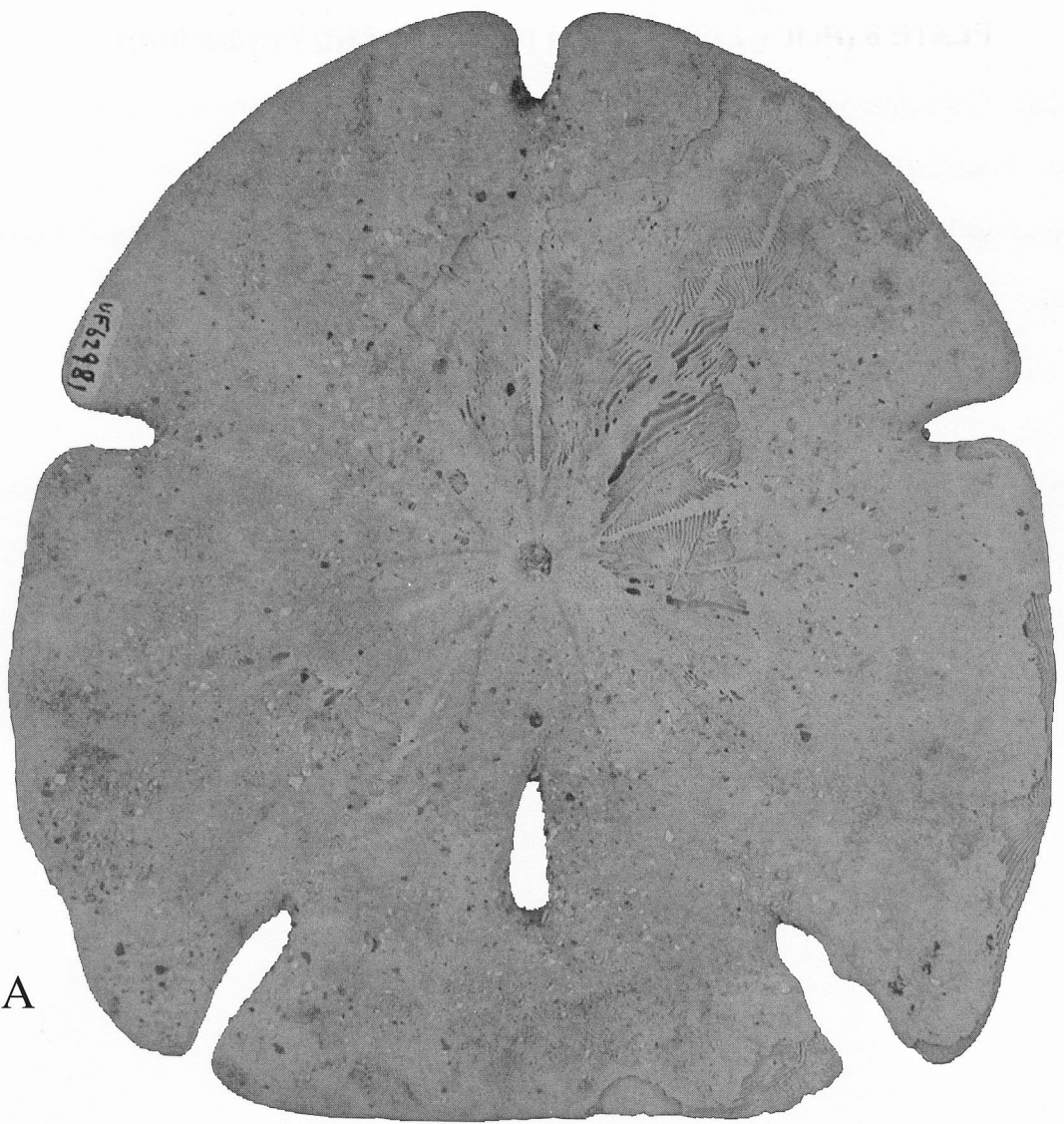
A) Encope michelini Agassiz, 1841; UF 62981; aboral view; 1x.



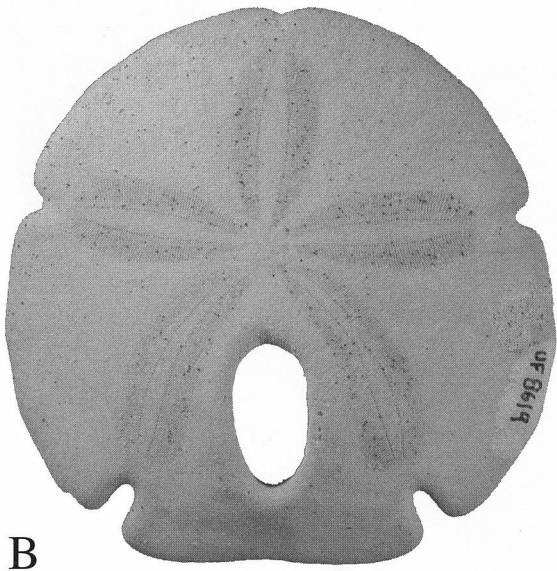
A

PLATE 6 (PLIOCENE AND/OR PLEISTOCENE ECHINOIDS)

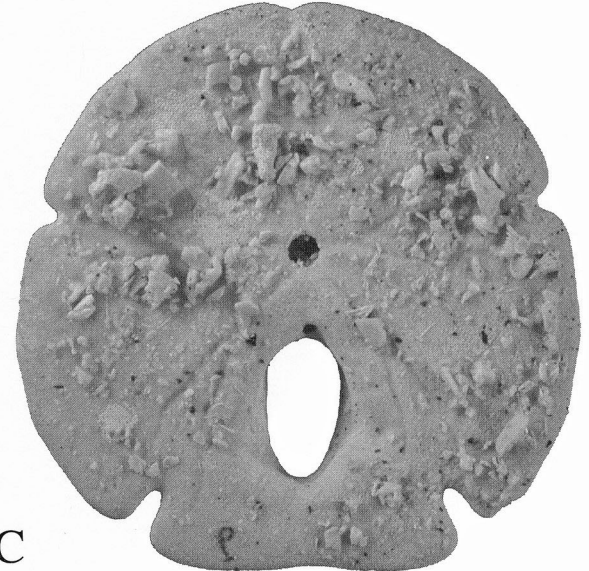
- A) Encope michelini Agassiz, 1841; UF 62981; adoral view; 1x.
- B) Encope tamiamiensis (Mansfield, 1932); UF 8619; aboral view; 1x.
- C) Encope tamiamiensis (Mansfield, 1932); UF 8619; adoral view; 1x.



A



B



C

PLATE 7 (PLIOCENE AND/OR PLEISTOCENE ECHINOIDS)

- A) Leodia sexiesperforata (Leske, 1778); USNM E 1183; Recent test taken from Cooke, 1959; plate 19, figure 4; aboral view; 1x.
- B) Leodia sexiesperforata (Leske, 1778); USNM E 1183; Recent test taken from Cooke, 1959; plate 19, figure 5; adoral view; 1x.
- C) Mellita acclinensis Kier, 1963; UF 28207; aboral view; 1x.
- D) Mellita acclinensis Kier, 1963; UF 28207; adoral view; 1x.
- E) Mellita isometra Harold and Telford, 1990; UF 108043; rock cut in two exposing interior of aboral test; 1x.
- F) Mellita isometra Harold and Telford, 1990; UF 108043; rock cut in two to exposing interior of adoral test; 1x.

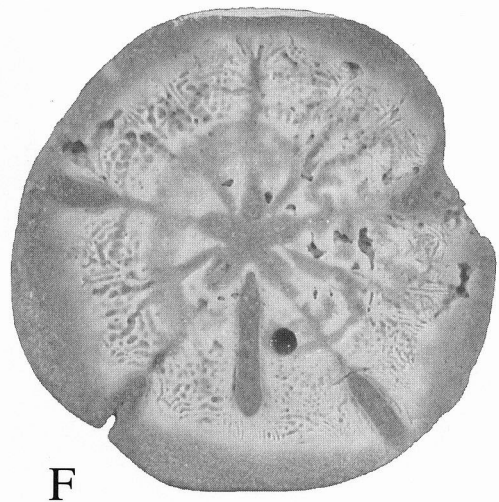
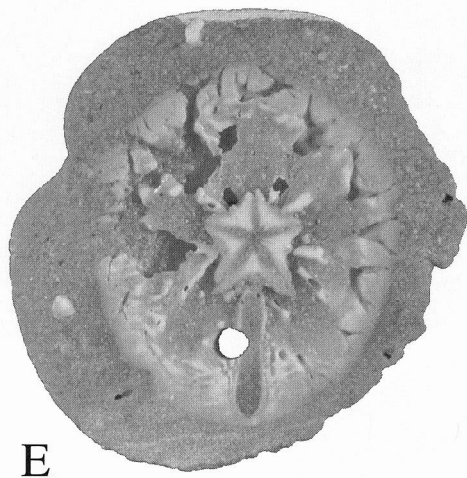
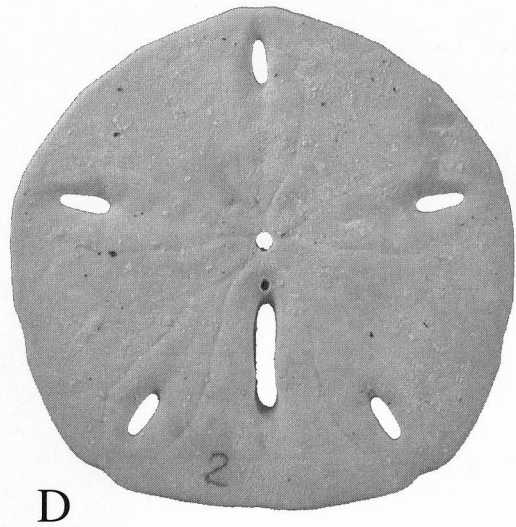
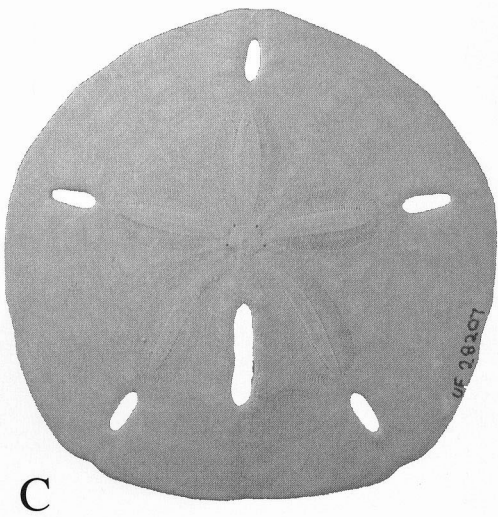
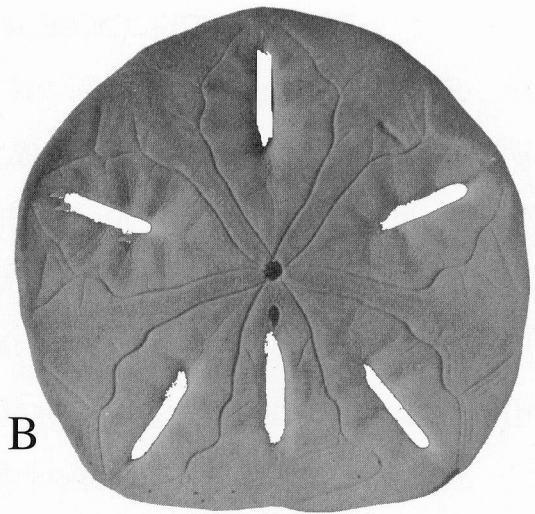
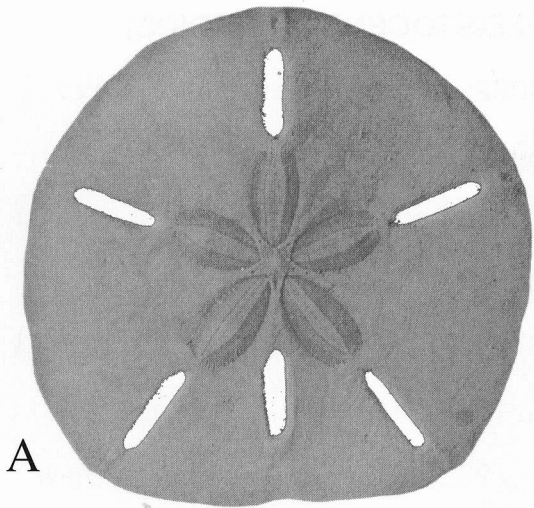
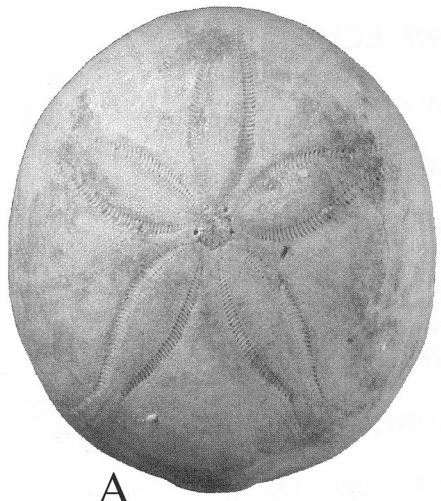
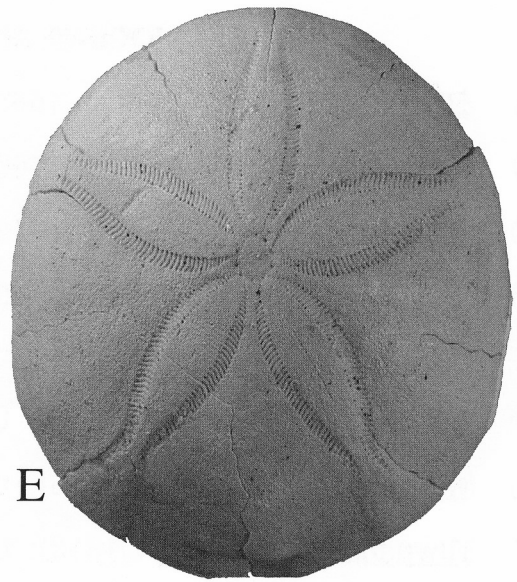


PLATE 8 (PLIOCENE AND/OR PLEISTOCENE ECHINOIDS)

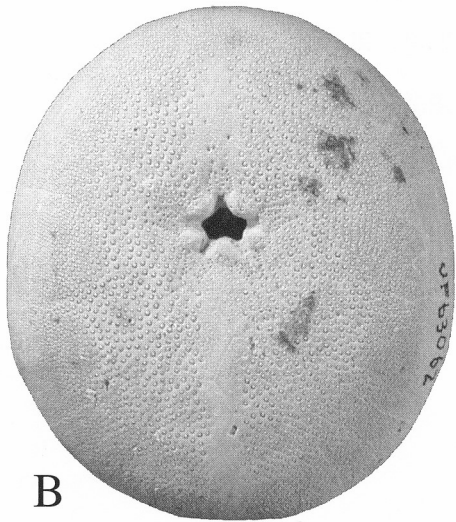
- A) Rhyncholampas ayresi Kier, 1963; UF 63062; aboral view; 1x.
- B) Rhyncholampas ayresi Kier, 1963; UF 63062; adoral view; 1x.
- C) Rhyncholampas ayresi Kier, 1963; UF 63062; posterior view; 1x.
- D) Rhyncholampas ayresi Kier, 1963; UF 63062; left lateral view; 1x.
- E) Rhyncholampas evergladensis (Mansfield, 1932); UF 17312; aboral view; 1x.
- F) Rhyncholampas evergladensis (Mansfield, 1932); UF 17312; adoral view; 1x.
- G) Rhyncholampas evergladensis (Mansfield, 1932); UF 17312; posterior view; 1x.
- H) Rhyncholampas evergladensis (Mansfield, 1932); UF 17312; left lateral view; 1x.



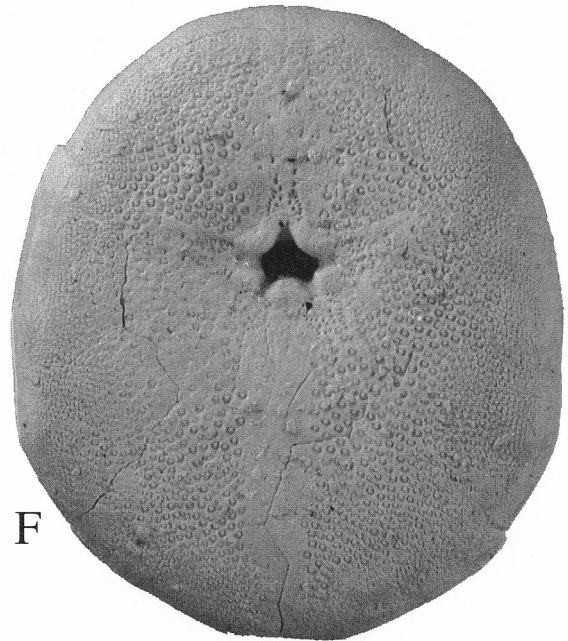
A



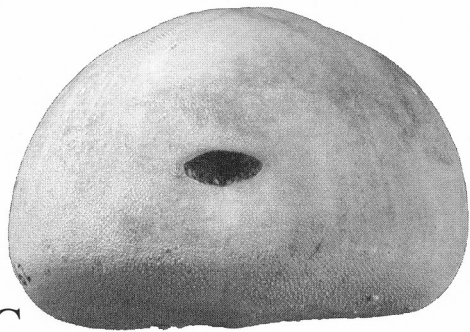
E



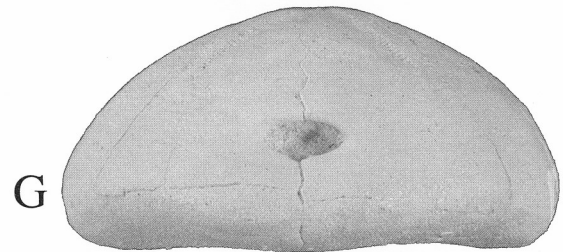
B



F



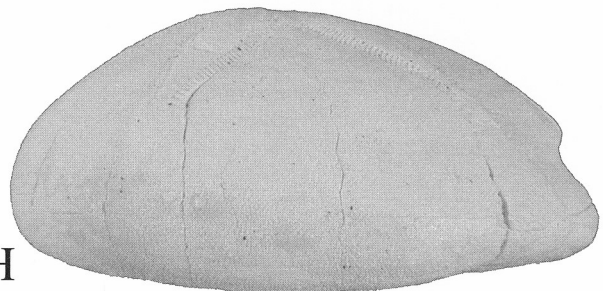
C



G



D



H

PLATE 9 (PLIOCENE AND/OR PLEISTOCENE ECHINOIDS)

- A) Agassizia porifera (Ravenel, 1848); UF 12894; aboral view; 1x.
- B) Agassizia porifera (Ravenel, 1848); UF 12894; adoral view; 1x.
- C) Agassizia porifera (Ravenel, 1848); UF 12894; posterior view; 1x.
- D) Agassizia porifera (Ravenel, 1848); UF 12894; left lateral view; 1x.
- E) Moira atropos (Lamarck, 1816); UF 100180; aboral view; 1x.
- F) Moira atropos (Lamarck, 1816); UF 100180; adoral view; 1x.
- G) Moira atropos (Lamarck, 1816); UF 100180; left lateral view; 1x.
- H) Moira atropos (Lamarck, 1816); UF 12641; Recent test; aboral view; 1x.
- I) Moira atropos (Lamarck, 1816); UF 12641; Recent test; adoral view; 1x.
- J) Moira atropos (Lamarck, 1816); UF 12641; Recent test; posterior view; 1x.
- K) Moira atropos (Lamarck, 1816); UF 12641; Recent test; left lateral view; 1x.

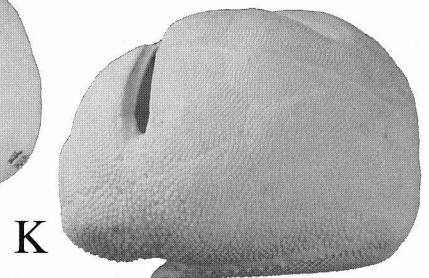
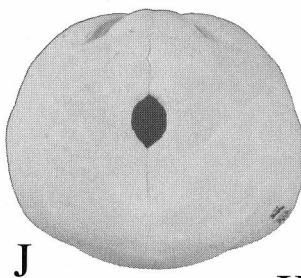
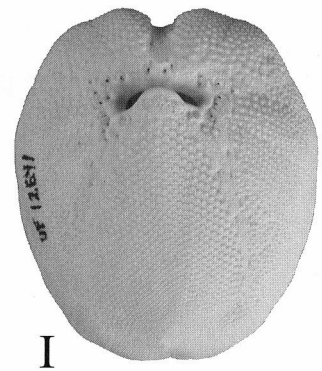
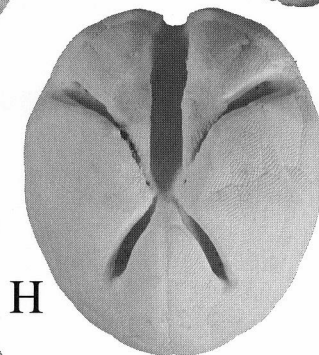
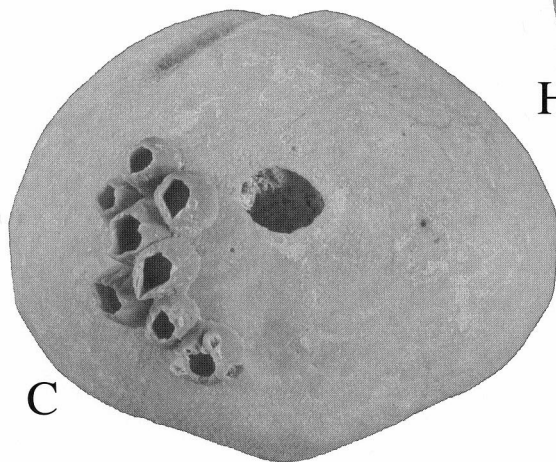
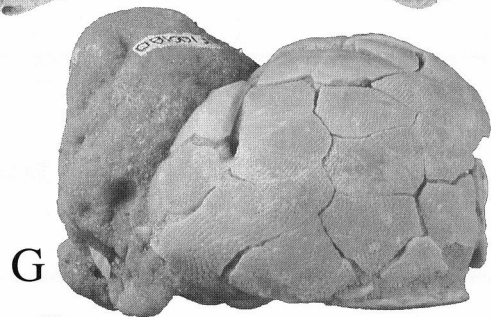
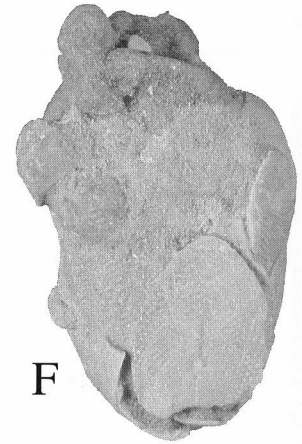
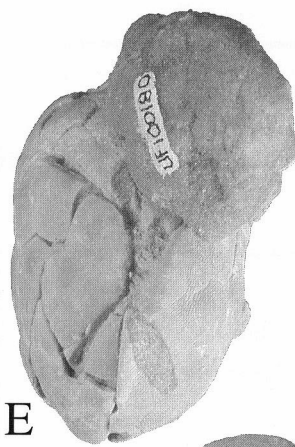
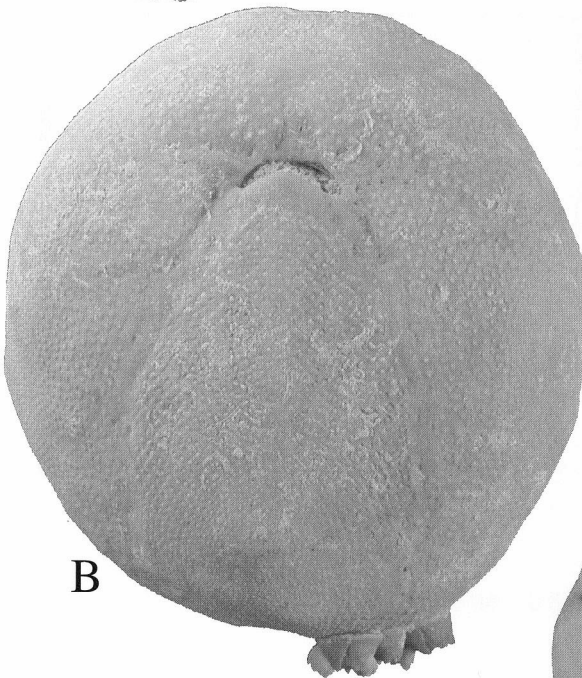
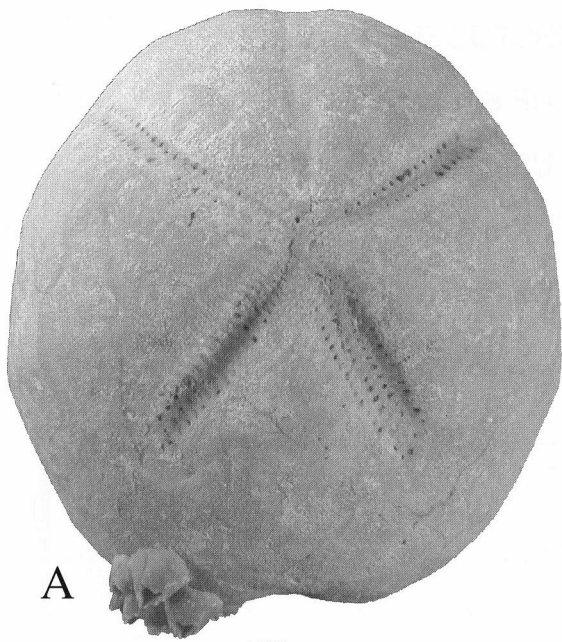
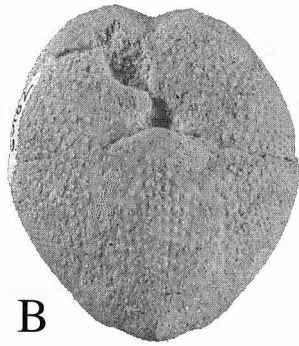


PLATE 10 (PLIOCENE AND/OR PLEISTOCENE ECHINOIDS)

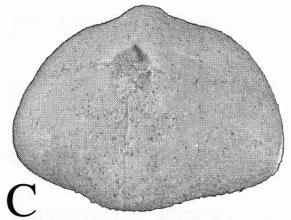
- A) Echinocardium orthonotum (Conrad, 1843); UF 60182; aboral view; 1x.
- B) Echinocardium orthonotum (Conrad, 1843); UF 60182; adoral view; 1x.
- C) Echinocardium orthonotum (Conrad, 1843); UF 60182; posterior view; 1x.
- D) Echinocardium orthonotum (Conrad, 1843); UF 60182; left lateral view; 1x.



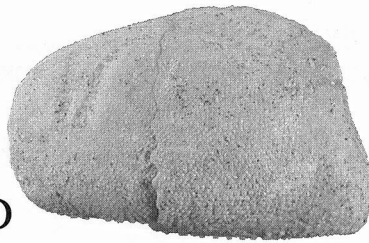
A



B



C



D

Table 1. Species list of described Florida Pliocene and Pleistocene echinoids with families arranged in systematic order, and genera and species listed alphabetically (described subspecies not included). Each species denoted occurs in either the Pliocene or Pleistocene, with several taxa occurring in both epochs. Stratigraphic occurrence for each species is listed, and for some, a brief synonymy (an older name no longer in use) is provided.

Cidaridae

Eucidaris tribuloides (Lamarck, 1816).

Stratigraphic Occurrence: Tamiami Formation.

Synonymy: Cidaris tribuloides Lamarck, 1816.

Arbaciidae

Arbacia improcera (Conrad, 1843).

Stratigraphic Occurrence: Tamiami, Jackson Bluff, and Caloosahatchee formations.

Synonymy: Arbacia crenulata Kier, 1963.

Toxopneustidae

Lytechinus variegatus (Lamarck, 1816).

Stratigraphic Occurrence: Tamiami and Caloosahatchee formations.

Synonymy: Echinus variegatus Lamarck, 1816 and Toxopneustes variegatus (Lamarck, 1816).

Echinometridae

Echinometra lucunter (Linnaeus, 1758).

Stratigraphic Occurrence: Caloosahatchee Formation.

Clypeasteridae

Clypeaster crassus Kier, 1963.

Stratigraphic Occurrence: Tamiami Formation.

Clypeaster rosaceus (Linnaeus, 1758).

Stratigraphic Occurrence: Caloosahatchee and Bermont formations and Miami Limestone.

Clypeaster subdepressus (Gray, 1825).

Stratigraphic Occurrence: Caloosahatchee and Bermont formations.

Clypeaster sunnilandensis Kier, 1963.

Stratigraphic Occurrence: Tamiami Formation.

Mellitidae

Encope aberrans Martens, 1867.

Stratigraphic Occurrence: Tamiami, Intracoastal, Caloosahatchee, Nashua, Bermont, and Anastasia formations.

Encope michelini Agassiz, 1841.

Stratigraphic Occurrence: Bermont and Anastasia formations and Miami Limestone.

Encope tamiamiensis (Mansfield, 1932).

Stratigraphic Occurrence: Tamiami Formation.

Leodia sexesperforata (Leske, 1778).

Stratigraphic Occurrence: Fort Thompson Formation and Miami Limestone.

Mellita acclinensis Kier, 1963.

Stratigraphic Occurrence: Tamiami Formation.

Mellita isometra Harold and Telford, 1990.

Stratigraphic Occurrence: Anastasia and Satilla formations.

Cassidulidae

Rhyncholampas ayresi Kier, 1963.

Stratigraphic Occurrence: Caloosahatchee Formation.

Rhyncholampas evergladensis (Mansfield, 1932).

Stratigraphic Occurrence: Tamiami Formation.

Synonymy: Cassidulus evergladensis Mansfield, 1932.

Schizasteridae

Agassizia porifera (Ravenel, 1848).

Stratigraphic Occurrence: Tamiami and Caloosahatchee formations.

Moira atropos (Lamarck, 1816).

Stratigraphic Occurrence: Bermont Formation.

Synonymy: Schizaster atropos (Lamarck, 1816).

Loveniidae

Echinocardium orthonotum (Conrad, 1843).

Stratigraphic Occurrence: Tamiami, Intracoastal, and Jackson Bluff formations.

Synonymy: Echinocardium gothicum (Ravenel, 1848).

SUGGESTED ADDITIONAL READINGS

- Clark, W. R. and M. W. Twitchell. 1915. The Mesozoic and Cenozoic Echinodermata of the United States. U. S. Geological Survey Monograph 54, 341 p.
- Cooke, C. W. 1941. Cenozoic regular echinoids of eastern United States. *Journal of Paleontology* 15(1): 1-20.
- Cooke, C. W. 1942. Cenozoic irregular echinoids of eastern United States. *Journal of Paleontology* 16(1): 1-62.
- Cooke, C. W. 1959. Cenozoic echinoids of eastern United States. U.S. Geological Survey Professional Paper 321, 106 p.
- Jones, D. S. 1997. The marine invertebrate fossil record of Florida. Pp. 89-117, in A. F. Randazzo. and D. S. Jones, (eds.), *The Geology of Florida*. University Press of Florida, Gainesville.
- Kier, P. M. 1963. Tertiary echinoids from the Caloosahatchee and Tamiami formations of Florida. *Smithsonian Miscellaneous Collections* 145(3), 84 p.
- Kier, P. M. 1972. Upper Miocene Echinoids from the Yorktown Formation of Virginia and their environmental significance. *Smithsonian Contributions to Paleobiology* 13, 41 p.
- Mooi, R. and D. Peterson. 2000. A new species of Leodia (Clypeasteroidea: Echinoidea) from the Neogene of Venezuela and its importance in the phylogeny of mellitid sand dollars. *Journal of Paleontology* 74(6): 1083-1092.
- Oyen, C. W. and R. W. Portell. 2001. Diversity patterns and biostratigraphy of Cenozoic echinoderms from Florida. *Palaeogeography, Palaeoclimatology, Palaeoecology* 166: 193-218.
- Portell, R. W. and Oyen, C. W. 1997. Occurrence of the regular urchin Eucidaris tribuloides from the Tamiami Formation (Pliocene) of Florida. *Tulane Studies in Geology and Paleontology* 30(2): 99-104.